



AMERICAN ENGLISH  
LANGUAGE SCHOOL

## Company Profile

# INTRODUCTION

American English Language School (AELS) is an English language school located in Brea (right next to Fullerton and Yorba Linda), Orange County, one of the most comfortable areas to live in California. Since its creation in 2008, AELS has made every effort to find the most effective educational methods with the goal of teaching local American English. As a result of these efforts, AELS has developed an educational system that incorporates its own educational philosophy.

Our unique and effective educational system is developed in-house with careful supervision of academic achievement, immediate performance feedback by way of small classes of 8 students or less, in-depth local culture/life experience activities, and teaching management to maintain passionate and diverse class sessions.

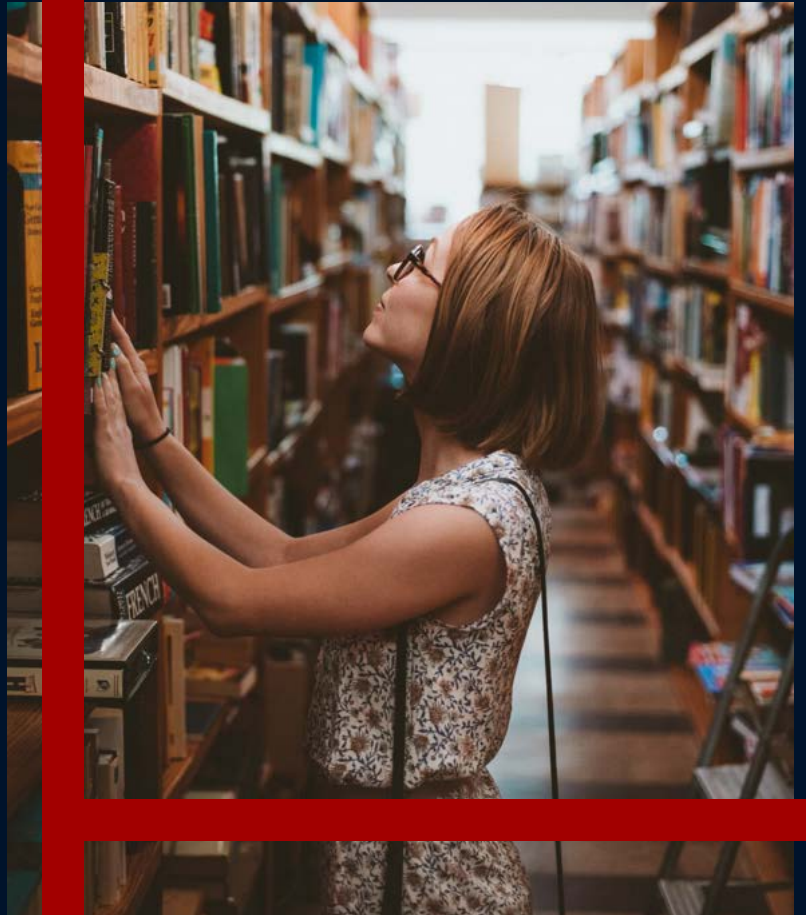


"A gem located in the city of Brea...Unlike other language schools, AELS offers much smaller classes so students can really have an opportunity to have more interaction with teachers and really get your money worth. They look for serious English learners. You [must] really push yourself...there and you won't regret [it]."

– Melinda W.

## OUR MISSION

Our mission is to provide the highest quality English-language learning experience for students who want either conversational or academic proficiency in order to live, work, or study in an English-speaking environment. By maintaining a low student/instructor ratio (8 students or less per class) and a comprehensive curriculum that focuses on life skill development and cultural immersion, we ensure that the AELS experience is uniquely rewarding for our students.



"The classes are specialized to meet different needs from various students."

– Max Z.

## OUR VISION

We aim to be the leading English Language School in the United States by providing the best English education possible through small classes, immediate and effective feedback, and affordable tuition.

# ACCREDITATION and LICENSE

American English Language School is accredited by CEA (Commission on English Language Program Accreditation) for the period August 2019 through August 2029. CEA is recognized by the U.S. Secretary of Education as a nationally recognized accrediting agency for English Language programs and institution. We are also authorized by the United States Department of Homeland Security to issue a Form I-20 to enroll F-1 students.



Bureau for Private Postsecondary Education



**TOEFL iBT<sup>®</sup>**  
ETS AUTHORIZED TEST CENTRE



# OUR TEACHERS

All AELS instructors are 100% native English speakers with an English-related degree or TESOL certification with extensive training and experience in teaching English. AELS and its students demand a lot from our teachers, so they must be highly qualified.

Our instructors all possess a minimum of a B.A. or B.S. degree from a fully accredited four-year university and have ESL/ELD teaching experience and hold memberships with TESOL, an association that supports English language teachers and helps them grow professionally.

"I was really worried about speaking wrong sentences, but my teachers always encourage me."

- Jiyeon C.



# DOJ and FBI CLEARANCE

Prior to hiring any new employees, AELS requires that a background check be performed on the applicant. This means that the applicant must get fingerprinted at a government-approved fingerprinting facility, which will allow AELS access to the applicant's criminal history. Providing a safe environment for our students is of utmost concern for AELS and is taken into account when making each and every hiring decision.



# OUR COURSES

## ESL

Our ESL program at AELS consists of 6 levels, from Basic to Level 5. Students will improve their grammar, writing, reading, listening and speaking skills. The final goal of the ESL program is to be able to use English comfortably in all modes of communication. Once students have completed the highest level (Level 5), they will receive a certificate of completion proving that they have completed the ESL program at AELS.

## TOEIC

Students will need to either complete Level 5 of our ESL program or score high enough on our placement test in order to enroll in our TOEIC program. This is a 12-week intensive course that gives students an overview of the test and ample opportunities to practice test-taking strategies for both tests: the Listening and Reading Test, and the Speaking and Writing Test. By the end of the program, students will be prepared to take the both TOEIC tests.





## OUR COURSES CONTINUED

### TOEFL

Students will need to either complete Level 5 of our ESL program or score high enough on our placement test in order to enroll in our TOEFL program. This is a 12-week intensive course that reviews the structure of the test, all four skill areas (reading, listening, speaking, and writing), and useful techniques for higher scores. At the end of the 12-week TOEFL class, students will be prepared to take the TOEFL exam.

### CITIZENSHIP/NATURALIZATION TEST

Students will learn how to fill out their Form N-400 (Application for Naturalization) and discuss their answers through at least 2 mock interviews. They will also practice reading and writing sentences in English to fulfill the reading and writing requirements. Finally, they will study all 100 Civics Questions and take practice tests on the information.

### PRIVATE LESSONS

For students looking for English help in a private setting, we also offer one on one lessons.



# CONTACT US

## LOCATION

451 West Lambert Road,  
Suite 210  
Brea, CA 92821

## PHONE

714. 990. 4657

## WEBSITE

[www.aels.edu](http://www.aels.edu)

## EMAIL

[info@aels.edu](mailto:info@aels.edu)

