

BSA

Bethnal Student
Academy

SCHOOL OF ENGLISH

ENGLISHUK 
member

Accredited by the
 BRITISH
COUNCIL
for the teaching
of English

MORE THAN AN ENGLISH SCHOOL



English Courses



Accommodation

Our brands:

LAS
London Agent Services
With Recruitment & Accommodation in London

 **LA4U**
LONDON ACCOMMODATION 4U



Bethnal Student Living
Accommodation in London

Welcome to Bethnal Student Academy!

Bethnal Student Academy is a unique English school located in a modern and trendy area of East London, buzzing with energy and creativity.

We are passionate about bringing the English language to life and helping our students develop the skills they need to use English in the real world. Our teaching approach is essentially student-centred with an emphasis on **personalised** learning. We offer a personalised and supportive environment. The average class size is 15, small enough to give each student the attention they deserve. Students' voices are heard and their feedback is welcomed and taken seriously.

Our aims are simple:

- All students learn English in a **fun** and motivating way.
- All students experience a **friendly, relaxed** and **productive** learning environment.
- All students **fully benefit** from their stay in London by participating in cultural, social and entertaining activities outside the classroom.

Our experienced and inspiring teachers can really relate to the students and help to build real confidence in their English abilities. Our teachers regularly challenge the students to push their boundaries and achieve their full potential.

This year is going to be another special year for us. We hope you can join us!

I look forward to meeting you in person at Bethnal Student Academy.



Rosie Baber

Rosie Baber
Director of Studies

Our school

Our school is in a modern building, where you can fully enjoy your experience in London. We have our student residence in the same building so there is no need to commute or pay for transport if you choose to live upstairs! Our classrooms are large, bright and equipped with computers, speakers and projectors, so teachers can provide interactive and dynamic lessons. Our students use course books so that they don't have to carry lots of photocopies and can study by themselves after class.

Students can meet each other and enjoy a coffee break in the common area or in the garden. We promote a healthy lifestyle, and that is why we provide free healthy snacks and promote sports in our social activities. We believe studying English should continue outside the classroom and that is why we provide free Wi-Fi and computer access and a library from which students can borrow books to read during their breaks or at home.

Each week, students can spend time with each other, share and enjoy life in London during the Friday Social Activity. Whether it's by enjoying a walk along the Regent's Canal, visiting a museum, or shopping in the Old Spitalfields market, our students have many opportunities to explore one of the most cosmopolitan cities in the world. The Social Activity is always led by a teacher who guides the students and provides extra insight into London life.



Our classrooms

Named after popular areas around East London, our classrooms accommodate an average of 15 students.

We have right- and left-handed chairs with table pads integrated, so students can move easily and follow the dynamism of our lessons.



Location

Our school is in an ideal location, Bethnal Green East London.

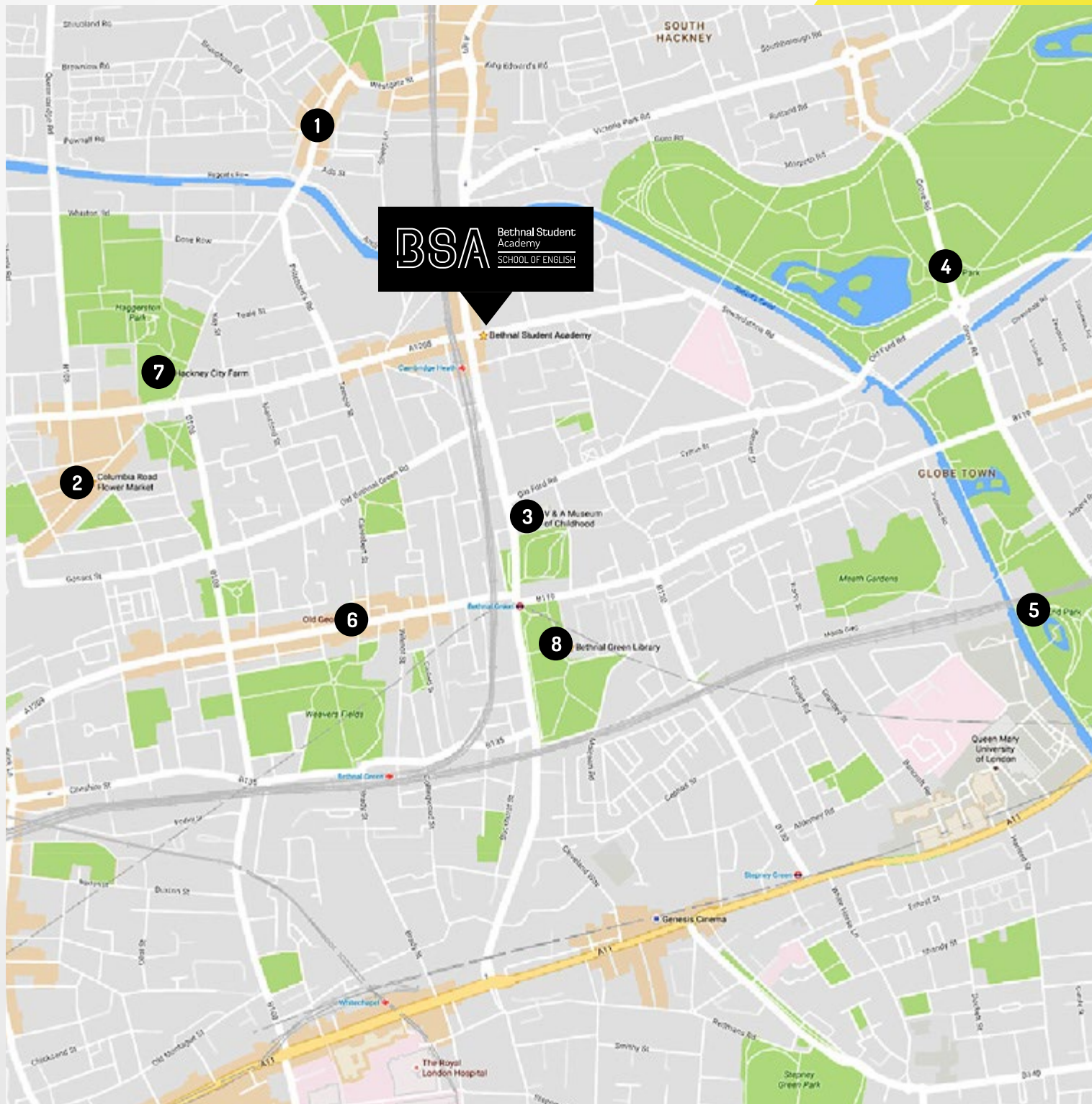
East London is famous for its art galleries and street art, food and fashionable coffee shops. This is part of what attracts students to this wonderful area. The school and residence are also conveniently located close to Central line, so you can hop on the Tube and you will be in Central London in less than 15 minutes.

However, if you are looking for fresh air and green space, Victoria Park (one of London's biggest) is just a five-minute walk from the school and student residence. The famous Regent's Canal is also a fantastic place to cycle or walk all the way to Camden Town if you wish! East London is full of things to see and do right at your doorstep.



Places of interest near us

- 1 Broadway Market
- 2 Columbia Road Flower Market
- 3 V&A
- 4 Victoria Park
- 5 Mile End Park
- 6 The Old George Pub
- 7 Hackney City Farm
- 8 Bethnal Green Library



Learning with us

At Bethnal Student Academy, we believe that the ultimate goal of learning a language is to be able to communicate clearly and accurately with other English speakers in a range of situations. Our methodology reflects this as classes focus on developing the skills students need to be adaptable in their use of English in real-life situations.

The morning General English class allows students to build the full range of knowledge they need to use English accurately. Learners practice grammar, vocabulary, pronunciation, listening, reading, speaking and writing in a balanced way. The Essential Skills and Speaking lessons enable students to practice the knowledge gained in the morning lessons, and to develop their fluency.

Each day, a key skill is selected and focused on, in order to ensure that progress is made at a continuous and steady pace.

Our teachers are all highly experienced and hold internationally-recognised teaching qualifications including the CELTA, Trinity TESOL and MA in TESOL. They are inspiring experts at using activities in order to maximise the learning experience and meet the specific needs and problems of our students, always going the extra mile to support our students.



General English

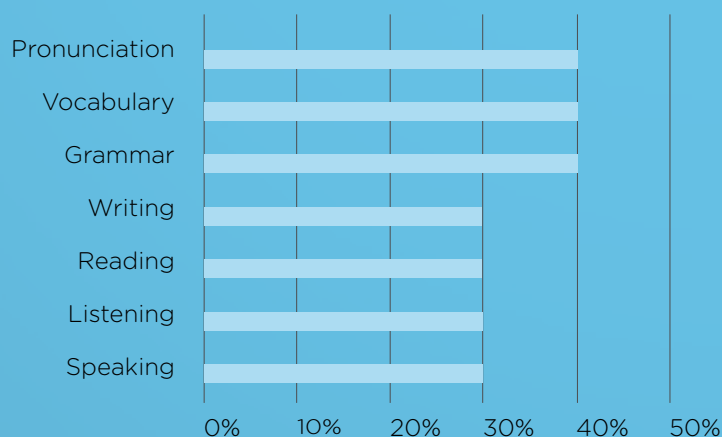
Our General English courses are designed to meet the needs of any student who would like to improve their English either for work, study or leisure. The courses aim to help students build their accuracy, fluency and pronunciation while also learning important language skills necessary for communicating in English. We offer 6 levels from General English Beginner (A1) to Proficient (C2).

	GE15 / GE9*	GE20	GE25
General English Morning Class	3 hours/day	4 hours /day	5 hours/day
Essential Skills			
Essential Functions / Conversations			

* Three hours per day, three days a week.

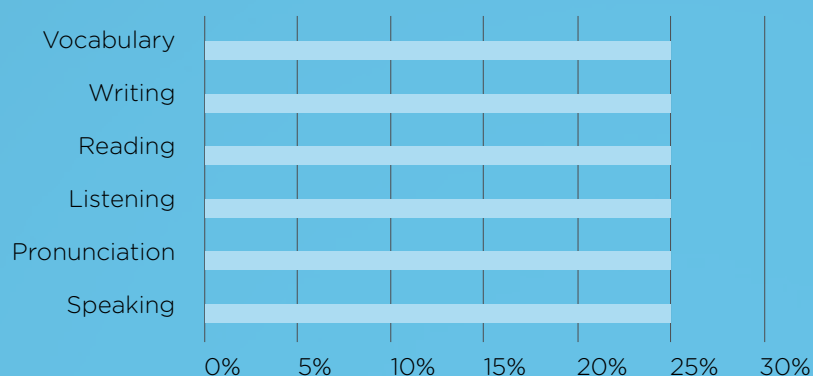
Morning classes

The morning classes are structured around globally recognised course books with communicative approach. Teachers are free to be creative and adopt the most up to date teaching methodologies to better cater to our students particular goals, needs and learning styles.



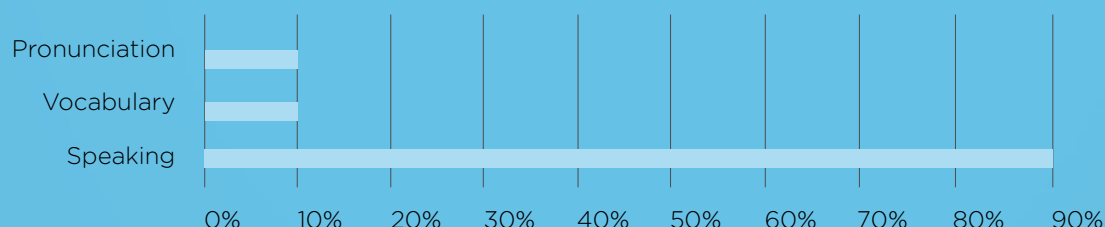
Essential Skills classes

Our essential skills classes are topic-based. The focus is on grammar, vocabulary, pronunciation, listening, reading and writing. The activation of these skills, which is learned in the morning classes, will help students become more confident in their use of English.



Speaking Classes

Our speaking classes are designed to really get our students talking! Lessons focus on important conversational role-plays, discussions and interesting topics such as festivals, travelling or business.



General English Plus

General English plus courses are offered to students who want to make rapid progress with their English and would like to combine the sociability of a group class with the personal support of one-to-one lessons. Students on this course follow the regular General English syllabus plus five hours of one-to-one lessons per week with one of our experienced teachers.

This means students can really focus on their weaknesses and specific needs, maximising improvement and giving students control over their learning adventure.

Academic English Courses

Academic 25

Our Academic courses are available for students of strong intermediate (B1+) level and above. Our courses will help students to master the significant skills they need to achieve their goals whether that means taking degree or postgraduate studies or career development.

Our English for academic purposes courses are not test-driven. Instead, many lessons will simulate the academic environment. Students will develop effective learning strategies, autonomy and professionalism. They will learn to write effective notes, read academic text books, give oral presentations and write reports, which will be very useful to practice expressing their ideas in English. The course put an emphasis on developing critical analysis and global thinking.

Academic 25+

General English plus courses are offered to students who choose to take an official exam. It covers all areas of Academic 25 with an addition of intensive exam preparation one-to-one lessons. This is to ensure that students learn the skills and techniques to achieve exam success. Exam preparation lessons are tailor-made based on students' choice of exam.

Time table	
25 hours per week	Monday to friday: from 8:45 to 14:45 (with 2x5 minutes break,10 minutes break and 40 minutes lunch)
	8:45 - 12:00 General English
	12:40 - 14:45 Academic Skills
25 PLUS hours per week	Monday to friday: from 8:45 to 14:45 (with 2x5 minutes BREAK,10 minutes break and 40 minutes lunch)+ 5 hours of private lessons.
	8:45 - 12:00 General English
	12:40 - 14:45 Academic Skills
	15:00 - 17:30 One-to-one (two days per week)

2018 Timetable

General English Timetable

	HOURS	MONDAY	TUESDAY	WEDNESDAY	THURSDAY	FRIDAY
9 OR 15 HOURS	08:45 - 09:45	AM GENERAL ENGLISH Block 1	AM GENERAL ENGLISH Block 1	AM GENERAL ENGLISH Block 1	AM GENERAL ENGLISH Block 1	AM GENERAL ENGLISH Block 1
	09:45 - 09:50	5-min Break	5-min Break	5-min Break	5-min Break	5-min Break
	09:50 - 10:50	AM GENERAL ENGLISH Block 2	AM GENERAL ENGLISH Block 2	AM GENERAL ENGLISH Block 2	AM GENERAL ENGLISH Block 2	AM GENERAL ENGLISH Block 2
	10:50 - 11:00	10-min break	10-min break	10-min break	10-min break	10-min break
	11:00 - 12:00	AM GENERAL ENGLISH Block 3	AM GENERAL ENGLISH Block 3	AM GENERAL ENGLISH Block 3	AM GENERAL ENGLISH Block 3	AM GENERAL ENGLISH Block 3
20 HOURS	12:00 - 12:40	----- Lunch -----				
	12:40 - 13:40	PM 1 ESSENTIAL SKILLS	PM 1 ESSENTIAL SKILLS	PM 1 ESSENTIAL SKILLS	PM 1 ESSENTIAL SKILLS	PM 1 ESSENTIAL SKILLS
25 HOURS	13:40 - 13:45	5-min Break	5-min Break	5-min Break	5-min Break	5-min Break
	13:45 - 14:45	PM2 SPEAKING CLASS	PM2 SPEAKING CLASS	PM2 SPEAKING CLASS	PM2 SPEAKING CLASS	PM2 SPEAKING CLASS
25+ HOURS	14:45 - 15:00	15-min Break	15-min Break	15-min Break	15-min Break	15-min Break
	Between 15:00 and 20:00	5 hours of One-to-One lessons per week				Between 15:00 and 20:00 SOCIAL ACTIVITY

Academic Timetable

	HOURS	MONDAY	TUESDAY	WEDNESDAY	THURSDAY	FRIDAY
25 HOURS	08:45 - 09:45	AM GENERAL ENGLISH Block 1	AM GENERAL ENGLISH Block 1	AM GENERAL ENGLISH Block 1	AM GENERAL ENGLISH Block 1	AM GENERAL ENGLISH Block 1
	09:45 - 09:50	5-min Break	5-min Break	5-min Break	5-min Break	5-min Break
	09:50 - 10:50	AM GENERAL ENGLISH Block 2	AM GENERAL ENGLISH Block 2	AM GENERAL ENGLISH Block 2	AM GENERAL ENGLISH Block 2	AM GENERAL ENGLISH Block 2
	10:50 - 11:00	10-min break	10-min break	10-min break	10-min break	10-min break
	11:00 - 12:00	AM GENERAL ENGLISH Block 3	AM GENERAL ENGLISH Block 3	AM GENERAL ENGLISH Block 3	AM GENERAL ENGLISH Block 3	AM GENERAL ENGLISH Block 3
	12:00 - 12:40	----- Lunch -----				
	12:40 - 13:40	PM ACADEMIC Block 1	PM ACADEMIC Block 1	PM ACADEMIC Block 1	PM ACADEMIC Block 1	PM ACADEMIC Block 1
	13:40 - 13:45	5-min Break	5-min Break	5-min Break	5-min Break	5-min Break
	13:45 - 14:45	PM ACADEMIC Block 2	PM ACADEMIC Block 2	PM ACADEMIC Block 2	PM ACADEMIC Block 2	PM ACADEMIC Block 2
25+ HOURS	14:45 - 15:00	15-min Break	15-min Break	15-min Break	15-min Break	15-min Break
	Between 15:00 and 20:00	5 hours of One-to-One lessons per week				Between 15:00 and 20:00 SOCIAL ACTIVITY



Level scale

This table is intended only as an approximate guide. For more detailed information regarding comparison between different types of reference scales please contact the relevant examination boards.

CEFR Scale	Cambridge Exams					IELTS exam
	KET	PET	FCE	CAE	CPE	
C2 - Proficient I can understand almost everything heard or read and can express myself spontaneously, very fluently and precisely.					Grade A	8+
				Grade A	Grade B	
					Grade C	
C1 - Advanced I can understand a wide range of demanding, longer texts and can express myself fluently and spontaneously without a lot of difficulty, although I still make some errors.				Grade B		7-8
			Grade A	Grade C		
B2 - Upper Intermediate I can understand the main ideas of complex topics and interact with a degree of fluency and spontaneity but still have problems with abstract or unfamiliar texts.			Grade B			5-7
		Distinction	Grade C			
B1 - Intermediate I can understand the main points of clear familiar topics and manage most common situations which occur when travelling in an area where the language is spoken.		Merit				4-5
	Distinction	Pass				
A2 - Pre-intermediate I can understand sentences and common expressions and communicate in simple and routine tasks.	Merit					3-4
	Pass					
A1 - Elementary I can understand and use familiar everyday expressions and can ask and answer questions about personal details.						2-3
A0 - Beginner I cannot understand or use any English.						0-2

Social activities

At Bethnal Student Academy we believe that learning continues outside the classroom and that social life is fundamental. That is why we organise free social activities every week, a Special Friday Activity once a month, and Saturday Trip every three months. All activities are led by one of our teachers.

These activities allow our students to make new friends with people from other classes, open their minds and practice what they have learnt during the week.

We offer various activities and we make sure that they meet our students' expectations.

London is a fascinating city with many museums and interesting things to do and see (such as markets, city farms, and walks along the Thames or the Regents Canal). We aim to help our students to get closer to real London life and experience what the city has to offer – and all for free!

We also offer the Special Friday Activity. These monthly activities cost no more than £15 and allow our students to do something different: playing sports, seeing a show at the theatre, or enjoying a British afternoon tea.

Studying in London is an amazing experience, but we also get out of the city from time to time with our Saturday Trip every three months. Our students go on an adventure to discover other curiosities the United Kingdom has to offer. Locations include Stonehenge, Oxford, Cambridge and Bath.

Learning English in London should be an unforgettable life experience. There is a huge amount to gain on top of learning English, and that is what we aim to offer to our students.

Activity	Location	Cost
Group trip	Museum of London	Free (+ transport)
Group trip	Old Spitalfields Night Market	Free
Quiz Night	Bethnal Student Academy	Free
Sports - Bowling	Westfield Stratford City	£7 per student (+ transport)

Example of Social Activity Schedule for a Typical Month



Accommodation

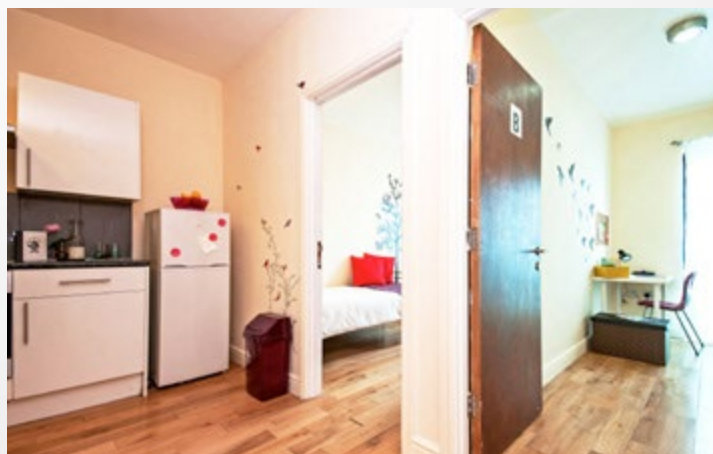
We Offer 2 Options



We offer accomodation with the school

1. Student Residence in The School

Our student residence is in the same building as the school and offers great value for our students. They don't have to commute or pay for transport and can make their own meals during the lunch break. We offer a range of different accommodation choices, from single and twin rooms to studio flats and dormitories. Whatever a customer needs, we have something affordable to fit their budget. The residence offers facilities including a 24/7 laundry room, free Wi-Fi access, a break-out room with a big screen to watch "the next match", enough space to study peacefully, as well as on-site security staff.



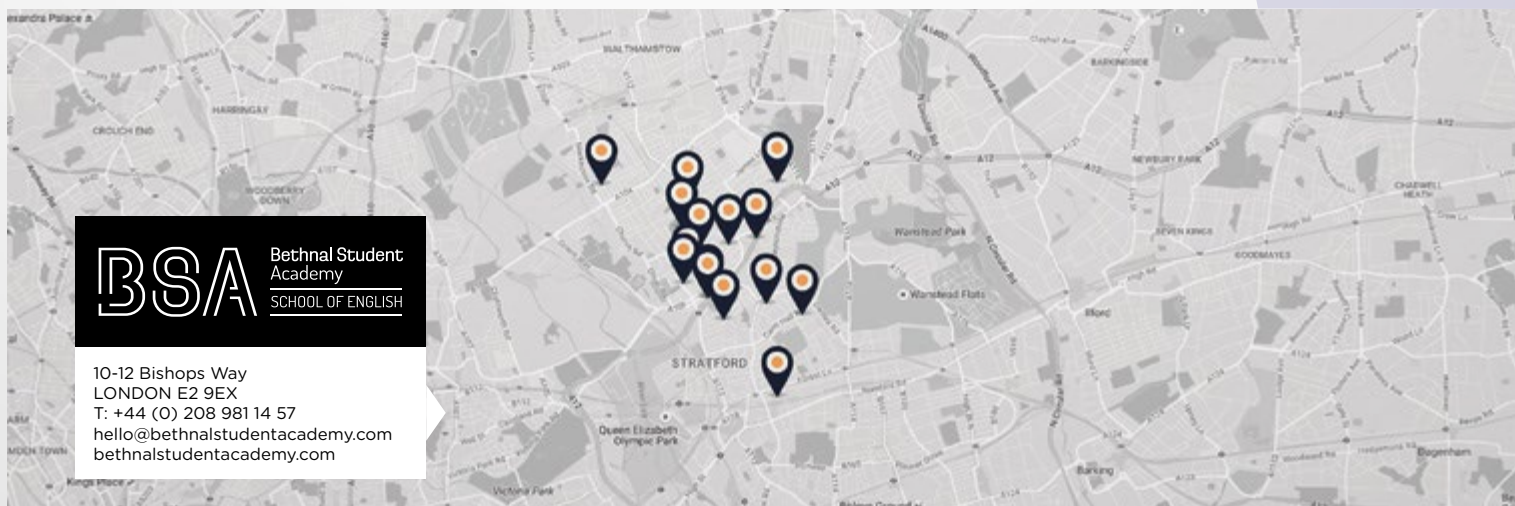
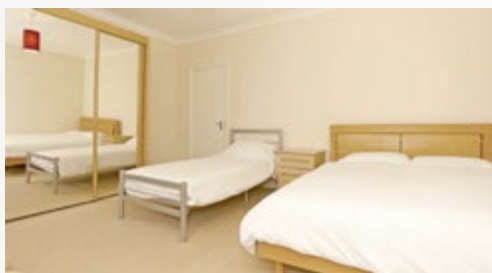
Accommodation

We Offer 2 Options

2. Shared House Close to the School

We also offer shared houses, which are a great option if you enjoy living with a group of people. Our houses are also located in East London, conveniently placed near public transport. You are never more than 20 minutes from the school or central London and have all the shops you may need around your new home.

They have all the necessary facilities, which can include a spacious kitchen and living room. We have a maintenance and cleaning team that ensures the houses are in perfect condition. Our tenants are from all over the world, and it's a great opportunity to meet people and make new friends.



Bank holiday 2018

No classes are held on Public Holidays and those missed will not be made up at a later date.

The school will be closed from December 24th to 6th of January 2018 due to Christmas holidays.

Bank Holidays 2018		
January 1st	Monday	New Year's Day
January 2nd	Tuesday	2nd January
March 30th	Friday	Good Friday
May 7th	Monday	Early May bank holiday
May 28th	Monday	Spring bank holiday
August 6th	Monday	August bank holiday
November 30th	Friday	St Andrew's Day
December 25th	Tuesday	Christmas Day
December 26th	Wednesday	Boxing Day







Bethnal Student
Academy


SCHOOL OF ENGLISH

CONTACT US

 +44 (0) 208 981 14 57

 10-12 Bishops Way - London E2 9HB

 hello@bethnalstudentacademy.com

 www.bethnalstudentacademy.com

FOLLOW US!

