



CALEDONIAN  
LANGUAGE SCHOOL

Learn to communicate  
with confidence  
at the Caledonian

7 Torphichen Street  
Edinburgh EH3 8HX  
Tel 00 44 (0)131 229 2988  
[www.caledonianlanguageschool.com](http://www.caledonianlanguageschool.com)  
[info@caledonianlanguageschool.com](mailto:info@caledonianlanguageschool.com)

English Language  
Courses 2015  
GENERAL

# Contents

|                                      |           |
|--------------------------------------|-----------|
| <b>Welcome</b>                       | <b>1</b>  |
| <b>Edinburgh</b>                     | <b>1</b>  |
| <b>Caledonian Language School</b>    | <b>2</b>  |
| <b>Plan Your Course</b>              | <b>2</b>  |
| Courses                              | 4         |
| Full-time General English            | 4         |
| Intensive General English            | 4         |
| Examination Preparation              | 4         |
| Cambridge First Preparation          | 4         |
| Cambridge Advanced Preparation       | 5         |
| IELTS Preparations                   | 5         |
| <b>Summer Courses</b>                | <b>5</b>  |
| Summer Full-time Course              | 6         |
| Summer Intensive Course              | 6         |
| Weekend trips                        | 6         |
| <b>Culture And Festivals</b>         | <b>6</b>  |
| The Edinburgh International Festival | 6         |
| Edinburgh Fringe Festival            | 6         |
| <b>Prices &amp; Dates</b>            | <b>7</b>  |
| <b>Accommodation Options</b>         | <b>7</b>  |
| Homestay                             | 7         |
| Student residence                    | 8         |
| <b>Social Programme</b>              | <b>8</b>  |
| <b>Working Volunteering</b>          | <b>9</b>  |
| <b>Contact Us Now</b>                | <b>9</b>  |
| <b>Course Prices</b>                 | <b>10</b> |

<https://www.facebook.com/CaledonianLanguageSchool>  
<https://twitter.com/caledonianls>  
<https://www.linkedin.com/in/caledonianlanguageschool>  
English Language - Courses 2015 - GENERAL

Design by JL Cezon - [www.photodesign-studio.com](http://www.photodesign-studio.com) | [photodesign.studio@hotmail.com](mailto:photodesign.studio@hotmail.com).

Brochure GENERAL CLS AW - V.7 July 2015



# Welcome



## Welcome to the Caledonian Language School!

Scotland is famous for its hospitality, and we aim to make students feel welcome at the Caledonian and in Edinburgh.

We have experienced and qualified teachers who create a friendly, supportive school where you can make great progress. We want you to have a wonderful time in Edinburgh,

and to learn to communicate with confidence in English. You'll achieve this by studying on courses where you practise communicating in English in realistic contexts.

## Edinburgh

Edinburgh is a wonderful city. It's easy and safe to walk around in, and really does have something for everybody. The city has a rich cultural heritage: it was home to Sir Walter Scott and Sir Arthur Conan Doyle, and JK Rowling. The Edinburgh Festival and Fringe Festival influence the cultural scene

here, so that Edinburgh has major cultural events all year, with world-famous companies such as the Mariinsky Ballet visiting.

Edinburgh is also a real student city, with 4 universities and the biggest further education college in Scotland. It's also very cosmopolitan, and open to visitors of all nationalities. There are opportunities for sport and the outdoors, culture and the arts, and of course, pubs, cafes,



*"Thank you for your warm welcome and all the advice that you gave us: all this was so precious!"*

*Marie-Jo, Switzerland*

restaurants and night clubs – something exciting to do, at every time of the day or night! It's also possible to find a part-time job, or to volunteer with a local charity – both good ways of meeting local people and learning about British society.



*"I think that your school is wonderful because you really care about your students."*

*Noemi, Italy*

## Caledonian Language School

Located in the city centre, the Caledonian Language School is an independently-owned school, where we take a personal interest in all our students, and nurture their potential. We have a core group of expert teachers, who have been with the school since it opened in 2011, plus others who have joined since then. All are qualified, committed and experienced.



✓ Edinburgh is a wonderful city. It's easy and safe to walk around in.

The school is on two floors of a spacious New Town building and has six classrooms, a self-access centre and a student common room with drinks machine and microwave, where you can relax between classes. It's in a lively area, close to coffee shops and restaurants. There are also plenty of shops and supermarkets in easy walking distance of the school.

## Plan Your Course

### Placement test

On your first day at the Caledonian, you'll have a placement test, which takes in grammar and vocabulary, plus an interview with a teacher. Your spoken English level is very important in your placement in a particular level. We aim to find the best class where each student will make maximum progress.

### Courses

From September to June, our courses are organised in 8-week periods or terms. Most students come for the 8-week term but it is possible to study for a shorter period (minimum 3 weeks) or alternatively for a longer course, by adding together any combination of 8-week terms. General English Courses are available at four levels:

- Pre-Intermediate (CEFR A2; IELTS 3.5-4.0)
- Intermediate (CEFR B1; IELTS 4.5-5.0; Cambridge PET)
- Upper Intermediate (CEFR B2; IELTS 5.5-6.0; Cambridge First)
- Advanced (CEFR C1/2; IELTS 6.5-8.5; Cambridge Advanced)

*"The teaching program  
and method have been right  
for me."*

*Evita, Italy*

## Sample Timetable

| AM (9-12.30) |                           | PM (13.15- 16.30)         |                   |
|--------------|---------------------------|---------------------------|-------------------|
| Monday       | Full-time General English | Cambridge First           | IELTS preparation |
|              | Intensive General English |                           |                   |
| Tuesday      | Full-time General English | Intensive General English |                   |
|              | Intensive General English |                           |                   |
| Wednesday    | Full-time General English |                           |                   |
|              | Intensive General English |                           |                   |
| Thursday     | Full-time General English | Intensive General English |                   |
|              | Intensive General English |                           |                   |
| Friday       | Full-time General English |                           |                   |
|              | Intensive General English |                           |                   |

Lunch Break

- Full-time General English: 16 hours per week.
- Intensive General English: 20 hours per week.
- Cambridge First Preparation: 3 hours per week.
- IELTS Preparation: 3 hours per week.

*"I love the school and I  
would like to continue studying  
at your language school."*

*Norbert, Slovakia*



### Full-time General English

You'll develop your English skills and knowledge, by practising new language through speaking, listening and reading (writing is mainly done at home). We will help you correct and improve your pronunciation and fluency. You'll use a course book, but also a wide range of extra materials, such as video clips, songs, newspaper or internet articles. If you stay for 8 weeks, you'll have the advantage of studying as part of a companionable, supportive group, with dedicated teachers, who really get to know you and encourage you to learn.

This course is for you, if you want general improvement, and to increase your confidence in using English. You may be planning to do a qualification later but have no immediate plan to take an examination.

### Intensive General English

You follow the same General English programme as on the full-time course, and in addition, you have two afternoons (4 hours per week) of speaking and listening practice. The focus is on improving communication in English, with interesting, varied activities to help you speak more confidently and naturally in English.

This course is for you, if you want general

improvement, but especially in speaking and understanding English. You may be planning to do an external exam later, but have no immediate examination focus.

### Examination Preparation

Our examination preparation courses can be taken either in addition to a General English course, or can be taken alone, if a student already has the right language level. Like the General English courses, they last 8 weeks, with 3 hours per week in class – and a lot of homework! The goal is to maximise your chance of success by becoming familiar



with the different types of question, and practising specific techniques. You'll get a lot of personal attention in the classes, to help you to focus on your individual strengths and weaknesses. And we have materials which you can borrow to study outside the classroom to help you prepare for the exam.

Exams are taken at the local exam centre in Edinburgh, and cost £120-£135. This is not included in the course fee.

### Cambridge First Preparation

This is an exam which shows that you have a good level of general English, and could work in a role where you have to deal with the general public. You'll have to perform well in all 4 skills and have a good Upper Intermediate level of grammar

*"I not only passed the FCE but also the CAE!!! I'm very happy right now. It would not have been possible without Caledonian Language School."*

*Eva, Spain*

and vocabulary to be successful in the First.

### Cambridge Advanced Preparation

This is an exam which is similar in format to Cambridge First, but at a significantly higher level. It shows that a student can cope in most everyday situations socially or at work, and can write effectively for most everyday purposes. You need to have a secure Advanced level of English (C1) to take Advanced successfully. Cambridge Advanced is also accepted as an English language qualification for some university courses.

### IELTS Preparation

IELTS is a useful qualification for university in the UK or another English-speaking country. This exam concentrates on academic English, with papers on each of the 4 skills – but no grammar questions.

You'll need IELTS 6.0/6.5 for most undergraduate university courses in the UK, or 6.5/7.5 for most master's degree courses.



## Summer Courses

In summer, the main focus is on activating your English. Many students come for 2-3 weeks, and gain real confidence in their ability to speak English in a range of real-life situations. Classes 5 mornings a week give students lots of practice in using the language



*"Thanks to you  
and the teachers, all so  
motivated and motivating."*

*Marie-Jo, Switzerland*

actively, and teachers encourage students to use the resources of the city, to practise English as widely as possible. The twice-weekly social programme also gives students a great chance to explore Edinburgh, during their stay.

There is a blend of interesting and varied activities in class, to activate your English as much as possible. These include:

- Speaking in groups or pairs
- Class discussions
- Learning grammar and vocabulary for new topics
- Role-playing interviews
- Songs and games
- Making a presentation
- Writing a review or application

Classes offer an optimal balance of learning new language and providing opportunities to practise it. You will have written homework at least once a week, and other shorter homework tasks on other days.

### Summer Full-time Course

This course is every morning, Monday to Friday, 09.00-12.15/12.30. Regular classes help you to activate your English and communicate more confidently, with a selection of the activities listed above.

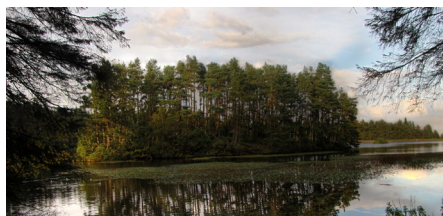
### Summer Intensive Course



The Intensive Course is suitable for people who want to improve their English as quickly as possible. It consists of classes 5 mornings a week, and two afternoons of additional speaking and listening classes. If you also join the Social Programme excursions two afternoons per week, you can really maximise your time in Edinburgh. This just leaves Friday for planning the weekend!

### **Weekend trips**

Weekend trips to the Highlands are organised by local partner, David Vivanco's Scottish Language School Tours, and have a great itinerary with some original activities.



## **CULTURE AND FESTIVALS**

The Edinburgh Fringe Festival and International Festival make the city a truly magical place to visit in August. There really is a performance around every corner, sometimes even on a bus!

### **The Edinburgh International Festival**

EIF is one of the most established arts festivals in the world, and brings worldclass performances and works of art to this northern city. For 3 weeks in the month of August every year, you can see music performances from groups as diverse as the Artemis Quartet or the Ladysmith Black Mambazo, or classical musicians such as Nicola Benedetti or Ute Lemper. In dance, there are companies such

as Dutch National Ballet or Ballet Rambert. There are also theatre groups from all over the world, often performing in their own languages.



### **Edinburgh Fringe Festival**

More or less at the same time, the celebrated Edinburgh Fringe Festival takes place, so there is even more choice. As well as traditional genres such as theatre and dance, the Fringe features comedy, modern circus acts, and performances which do not belong in any single category. The Fringe is dynamic and exciting, advertising itself as "the world's largest arts festival". There are performances large and small in every theatre or hall in the city, some acts even appear in restaurants or buses! It's no exaggeration to say that the Fringe is everywhere in Edinburgh.







*"I was sceptical about whether I would enjoy the food. But in fact, I was fed by a real chef, like if my hostess were my grandmother."*

*Olivier, France*

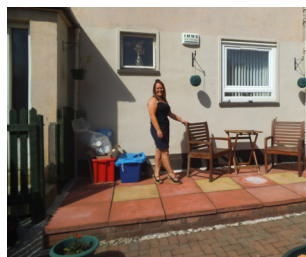
## Homestay

Staying with a host family gives you a great opportunity to practise your English with real native speakers, and to learn more about British and Scottish culture. All

of our families are carefully selected and inspected regularly, and we give all students a questionnaire soon after arrival, to make sure that everything is OK. We look for families who:

- Are friendly and welcoming to students
- Have a clean and pleasant house
- Live where there is easy transport to the school.

A host family can be a couple and two children, a couple whose children have left home, or a single retired person, or a young working person ... or any kind of household. All of them are carefully selected to make



# Accommodation Options

students feel at home and enjoy their stay in Edinburgh.

Most of our families live in residential areas, so you'll often have to take a bus to come to school from your family – an Edinburgh bus pass costs £17 per week or £51 per month. But Edinburgh is a small city, and the journey time is around 20-35 minutes.

You can choose between self-catering, when you buy and cook all your own food, and half board (dinner, bed and breakfast) when the family provide breakfast and dinner for you. When you chose, you should think about how much independence you want, and if you want to be responsible for all your shopping and cooking.

## Student residence

If you prefer to stay in **student residence**, we work with a local partner offering this. The modern residence provides single room, self-catering accommodation in five-bedroom student apartments. All rooms are furnished and have en-suite bathrooms and each student flat shares a lounge area and kitchen. The student residence also has:

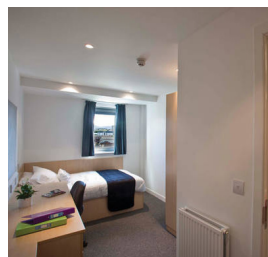
- a common room with TV and sofas, vending machines and a football table
- internet access
- coin operated laundry facilities
- secure door entry system, 24-hour CCTV
- social evenings.

The student residence is next to a bus stop and a big supermarket is next door. The accommodation is very close

to frequent bus routes, making it easy for you to travel to and from the residence or the city centre.

It takes 20 minutes by bus to the city centre, and 10 minutes on foot from the bus stop to the school.

If you would like to book accommodation in a student residence, you **must pay in full** when you enrol on the course. We cannot accept reservations for the student residence without full payment.



## Social Programme

Studying is important, but so is what you do outside the classroom. From September to June, we organise a limited social programme, just to introduce you to the city and get you out and about in an informal atmosphere. Outings are every couple of weeks, and are a good way to meet students from other classes and practise English outside the school. A recent programme included:

- a Royal Mile guided tour (free)
- Scotch Whisky Experience (£10.50)
- a visit to the Royal Botanical Gardens (free)
- a Harry Potter tour (free)
- a visit to South Queensferry (£4.70 bus ticket).

In addition to the ticket price, you can decide whether to have a coffee or a beer with the group towards the end of the visit.

We'll also highlight local events, especially if they are free (top tip: Edinburgh Castle is free on St Andrew's Day in November!).

In **summer**, the Caledonian has an extra busy social programme, because most of our students are here for a short time, and need to make the most of their stay in Edinburgh.

There are two excursions every week, and we make the most of the short Scottish summer, for example to play croquet at beautiful Lauriston Castle – unmissable!

Weekend trips to the Highlands are organised by local partner David Vivanco's Scottish Language School Tours, and have a great itinerary with some original activities.



*"... hidden streets and wonderful graveyards in the Harry Potter Tour!"*

*Sinan, Turkey*

# Working or Volunteering

A lot of students are interested in finding a **part-time job** – it's a good way of meeting English speakers, of experiencing another side of life in the UK, and of having something to add to your **CV**. It can take some time to find a job, depending on the time of year. However, your teachers will give you help in writing your curriculum vitae (CV), and covering letter or e-mail. You may also be able to role-play interviews in class.



Volunteering is another good way to use English and to meet a group of people outside the school. You may have valuable skills which can be used by a voluntary group here in Edinburgh. The Edinburgh Volunteer Centre is just across the road from the school, and will help you to find a placement.

EU citizens are allowed to work in the UK, but if you are from outside the EU, this may not be the case. Please check, if you are from outside the EU.

## Contact Us Now

Choosing a school in another country is a big decision, and most people have particular questions which they'd like to ask. You can contact us on:

- [info@caledonianlanguageschool.com](mailto:info@caledonianlanguageschool.com)
- 0044 1312292988.

Alternatively, you'll find more information at [www.caledonianlanguageschool.com](http://www.caledonianlanguageschool.com) or <https://www.facebook.com/CaledonianLanguageSchool>

Caledonian Language School  
Palmerston House  
7 Torphichen Street  
Edinburgh  
EH3 8HX

## Prices & Dates

You can start a course at the Caledonian on most Mondays of the year. However, we offer a significant discount if you take one of our 8-week, fixed term packages. Start and finish dates are fixed, to keep administration to a minimum, and prices are as low as possible – less than £5 an hour on the intensive course.

Other start and finish dates are possible, but the greater flexibility demanded makes this more expensive.

- Check our website [www.caledonianlanguageschool.com](http://www.caledonianlanguageschool.com) for our latest dates & prices.
- Or contact us on [info@caledonianlanguageschool.com](mailto:info@caledonianlanguageschool.com) if you have any questions.

*"Thank you for all,  
your school it is fantastic  
and for me it was a great  
experience."*

*Flavia, Italy*

# Course Prices

| 2015/16 Terms (8 week periods) - Day Courses  |  |                |
|---|--|----------------|
| Term 5  | 31 August - 23 October 2015              |                |
| Term 6  | 26 October - 18 December 2015            |                |
| Term 1  | 11 January - 04 March 2016               |                |
| Term 2  | To be confirmed                          |                |
| Term 3  | To be confirmed                          |                |
| Term 4: Summer Course   | 6 July—28 August 2015                    |                |
| 2015/16 - Day Courses   |  |                |
|   | Hours per week<br>(tuition + self study) | Price per term |
| Full-time General English Course (1)  | 16 + 6                                   | £685.00        |
| Intensive General English Course (2)  | 20 + 6                                   | £840.00        |
| Communication in English  | 4  | £220.00        |
| First Certificate in English Preparation (FCE)  | 3 + 2                                    | £175.00 (3)    |
| IELTS Preparation   | 3 + 2                                    | £175.00 (3)    |
| (1) Price per week £160.00 (minimum 3 weeks) (2) Price per week £180 (minimum 3 weeks)<br>(3) Students full-time/ Intensive Courses £160.00 |  |                |

| Summer Courses, July- August 2015 |  |      |               |
|-----------------------------------|--|------|---------------|
|                                   | Hours per week<br>(tuition + self study) | Term | Price<br>Week |
| Full Time Summer Courses          | 16 + 6                                   | £810 | £165          |
| Intensive Summer Courses          | 20 + 6                                   | £995 | £190          |
| (1) Minimum 2 weeks               |  |      |               |
| Term (8 weeks)                    | 6 July–28 August 2015                    |      |               |



| 2015/16 Terms - Evening Courses |                                 |
|---------------------------------|---------------------------------|
| <b>Term 3</b>                   | 21 September - 18 December 2014 |
| <b>Term 1</b>                   | 11 January - 02 April 2015      |
| <b>Term 2</b>                   | 05 April - 25 June 2015         |
|                                 |                                 |

| 2015/16 - Evening Courses        |       |  |                |
|----------------------------------|-------|--|----------------|
|                                  | Weeks | Hours per week<br>(tuition + self study) | Price per term |
| <b>Lower Intermediate Course</b> | 12    | 4 + 2                                    | <b>£260.00</b> |
| <b>Lower Intermediate Course</b> | 12    | 4 + 2                                    | <b>£260.00</b> |
| <b>FCE Preparation</b>           | 12    | 4 + 2                                    | <b>£290.00</b> |
| <b>CAE Preparation</b>           | 12    | 4 + 2                                    | <b>£290.00</b> |

|  |                              |
|--|------------------------------|
| <b>Accommodation arrangement fee</b>               | <b>£40.00</b>                |
| <b>Host Families</b>                               |                              |
| <b>2015/16 prices per person per week</b>          |                              |
| <b>Self-catering room</b>                          | <b>£95.00</b>                |
| <b>Room, breakfast and dinner</b>                  | <b>£140.00</b>               |
| <b>Summer 2015 prices per person per week</b>      |                              |
| <b>Self-catering room</b>                          | <b>£115.00</b>               |
| <b>Room, breakfast and dinner</b>                  | <b>£150.00</b>               |
| <b>Student Residence price per person per week</b> |                              |
| <b>Self-catering room</b>                          | <b>Price to be confirmed</b> |
| <b>Summer self-catering room</b>                   | <b>£26,50 per night</b>      |

In addition to the fee, you will pay £36 (£32 summer) towards the cost of a coursebook and other course materials. There is a 5% discount on the course fee for students who have a European Youth Card. There is a 5% discount on the course fee for students who have a European Youth Card.

Additional fees apply to non-EU students who require support with visa application (£100 charge). There is an additional charge of £50 for airport pick-up, where we arrange for a local taxi firm to collect you and take you to your accommodation address. Students paying by credit card will be charged an additional fee of 3%.



Date received:

## REGISTRATION FORM

*All questions contained in this form are confidential and will become part of your student record*

| PERSONAL DETAILS               |   |
|--------------------------------|---|
| Surname:                       |   |
| Name:                          | <input type="checkbox"/> Male <input type="checkbox"/> Female |
| Date of birth: _ _ / _ _ / _ _ | Passport/ID number:   |
| Telephone number:              | Nationality:  |
| e-mail:                        | First/home language:  |
| Home address:                  | Edinburgh address:  |
| Emergency contact person:      | Relationship:   |
|                                | Telephone number:   |
|                                | e-mail:   |

| EDUCATION  |                            |
|--|----------------------------|
| Highest level of academic qualification:   |                            |
| List any English language qualifications eg Cambridge, IELTS, CEFR level etc:  |                            |
| Estimated level of English: <input type="checkbox"/> Pre-Intermediate <input type="checkbox"/> Intermediate <input type="checkbox"/> Upper Intermediate <input type="checkbox"/> Advanced        |                            |
| COURSE DETAILS   |                            |
| Date of course applied: from _ _ / _ _ / _ _ to _ _ / _ _ / _ _  |                            |
| I would like to apply for the course(s):   |                            |
| Day Courses: Full-time <input type="checkbox"/> Intensive <input type="checkbox"/> Communication in English <input type="checkbox"/> FCE <input type="checkbox"/> IELTS <input type="checkbox"/> |                            |
| Summer Courses: Full-time <input type="checkbox"/> Intensive <input type="checkbox"/>  |                            |
| Evening Courses: Pre-intermediate <input type="checkbox"/> Intermediate <input type="checkbox"/> FCE <input type="checkbox"/> CAE <input type="checkbox"/>                                       |                            |
| Reason for taking the course:  |                            |
| ACCOMMODATION DETAILS (leave blank, if you do not want accommodation)  |                            |
| Accommodation start date:  | Accommodation finish date: |
| Preferred accommodation:   |                            |
| Student residence (self-catering only)   | <input type="checkbox"/>   |
| Host family self-catering  | <input type="checkbox"/>   |
| Host family B&B and evening meal   | <input type="checkbox"/>   |
| Do you smoke? <input type="checkbox"/> Yes <input type="checkbox"/> No Would you prefer non-smoking accommodation? <input type="checkbox"/> Yes <input type="checkbox"/> No                      |                            |
| TRANSFER (leave blank, if you do not want a transfer)  |                            |
| Would you like a private transfer to your accommodation?   |                            |
| <input type="checkbox"/> Yes on arrival <input type="checkbox"/> Yes on departure <input type="checkbox"/> Yes on arrival and departure <input type="checkbox"/> No                              |                            |

## PAYMENT

Calculate the fees for your course

|                       |  |
|-----------------------|--|
| Course fee            |  |
| Additional courses    |  |
| Accommodation fee     |  |
| 4 weeks accommodation |  |
| Transfer fee          |  |
| Books                 |  |
| <b>Total Cost</b>     |  |

## ADDITIONAL INFORMATION

**Do you have any medical conditions which could affect your study:** **If so, please give details:**

**Do you have any special educational needs eg dyslexia:**

## TERMS & CONDITIONS

### Registering for a course

You should register for the course and accommodation at the same time.

- Fill in the registration form
- Fill in the accommodation details, or leave blank
- Send the completed documents by e-mail, fax or post.
- Pay the £100 deposit by completing your credit card details OR by bank transfer, sending a copy of the bank receipt.
- Pay the full course fee and accommodation fee by 4 weeks before the start of the course. If you pay by bank transfer, send a copy of the bank receipt to us.

\*When your registration form and deposit are received, we will send you an e-mail confirmation of your place on the course, and confirm the accommodation when it has been arranged. We will also confirm that we have received your deposit and the full fees when they arrive in our bank account. The student is responsible for paying any bank charges or commission, so that the school receives the full fee.

### Late registration

If you register less than 4 weeks before the start of a course, you must pay the fees in full immediately.

### Payment

As stated above, you can pay by credit or debit card; alternatively, you can pay by bank transfer.

Caledonian Language School Ltd bank account is:

### NatWest Bank

8 George Street, Edinburgh EH2 3DZ  
NAME OF ACCOUNT: Caledonian Language School Ltd  
SORT CODE: 60 30 20  
ACCOUNT NUMBER: 28462386  
IBAN NUMBER: GB23NBWK60302028462386  
SWIFT CODE/BIC NUMBER: NWBKGB2L

### Cancellation

If for any reason, you have to cancel the course, the following conditions apply:

- Cancellation in writing more than 4 weeks before start of course: refund of any money paid, minus £50 administration fee.
- Cancellation in writing less than 4 weeks before start of course: deposit not returned
- Cancellation in writing after start of course: no deposit or fees returned.

### Insurance

It is the responsibility of individual students to arrange insurance cover. We advise you to do this at the same time as registering. Your insurance should cover any possible loss, damage, injury or illness, including:

- personal belongings
- medical costs
- travel costs
- fees (eg if course missed, due to illness or other emergency).

### Necessary alterations

We will make every effort to ensure that courses, accommodation and activities are delivered as planned. However, it may be necessary to make alterations for reasons outside our control. In such a case, other equivalent options will be offered. If, for example, a lesson has to be cancelled, it will be re-arranged at an alternative time.

The school reserves the right to transfer to a more appropriate course anyone who has registered for a course which is not suitable for them eg at the wrong level. All courses will run only if there are sufficient numbers of students to make the course viable.

This will be decided by the management of the Caledonian Language School. If you have paid for a course which does not run, you will receive a full refund of any tuition fees paid for that course.

### Visa requirements

You should check at [www.visas.gov.uk](http://www.visas.gov.uk), if you think you may need a visa to come to study in the UK. There is advice on how to apply for a visa on the British Council website [www.educationuk.org](http://www.educationuk.org)

### Minimum age

You must be at least 18 to register for a course at Caledonian Language School. It may be possible to take a course, if you are aged 16 or 17 and have a guardian living in Edinburgh, but you must tell us that you are under 18.

### Level of course

Caledonian Language School offers courses at a variety of levels, but we do not generally offer beginners' courses. The minimum level required is Pre-Intermediate.

### Photographs

The School reserves the right to use photographs taken during courses to illustrate its promotional material. If a student wishes that his or her photo should not appear in this material, they should inform the School in writing by one week after the photoshoot. These photos have no commercial or contractual value.

**I have read and accept the Terms and Conditions.**

Signature:

Date:

**Please return this form to:**

**Caledonian Language School**  
[info@caledonianlanguageschool.com](mailto:info@caledonianlanguageschool.com)  
7 Torphichen Street  
Edinburgh EH3 8HX  
United Kingdom  
Tel 00 44 (0)131 229 2988



*All questions contained in this form are confidential and will become part of your student record*

### PAYMENT METHOD

- ☐ Cheque (UK £ Sterling only) ☐ Credit card ☐ Debit card ☐ Bank transfer

### CHEQUE

- ☐ Drawn on a British Bank made payable to the school

### CREDIT/DEBIT CARD

- ☐ I hereby authorise Caledonian Language School to charge the deposit of £100 to my card.  
☐ I hereby authorise Caledonian Language School to charge the balance of £ \_\_\_\_\_ to my card 30 days before the course starts.  
☐ I hereby authorise Caledonian Language School to charge the full amount of £ \_\_\_\_\_ to my card now.

*Students paying by credit card will be charged an additional fee of 3%.*

Type of card (Visa, Mastercard, etc): \_\_\_\_\_

Name of cardholder (as it appears on the card): \_\_\_\_\_

Credit card number: \_ \_ \_ \_ / \_ \_ \_ \_ / \_ \_ \_ \_ / \_ \_ \_ \_ / \_ \_ \_ \_

Security code (3 digit number on back of card): \_ \_ \_

Expiry date: mm/yy \_ \_ / \_ \_ Start date: mm/yy \_ \_ / \_ \_

Signature: \_\_\_\_\_

### BANK TRANSFER DETAILS

**Bank:** Nat West Bank  
**Address:** 8 George Street, Edinburgh EH2 3DZ  
**Name of account:** Caledonian Language School Ltd  
**Sort Code:** 60 30 20  
**Account Number:** 28462386  
**IBAN Number:** GB23NWBK60302028462386  
**SWIFT Code/BIC Number:** NWBKGB2L





V.7 July 2015 | design by JL Cezon | www.photodesign-studio.com | photo design studio@hotmail.com



<https://www.facebook.com/CaledonianLanguageSchool>  
<https://twitter.com/caledonianls>  
<https://www.linkedin.com/in/caledonianlanguageschool>