



Worldwide School of English

Auckland, New Zealand





New Zealand

The best place in the world?
Come and see why we think so!

Auckland. New Zealand's largest city - the City of Sails - is an international, cosmopolitan and beautiful place. Auckland is always rated one of the TOP 5 cities in the world to live.

Worldwide Philosophy



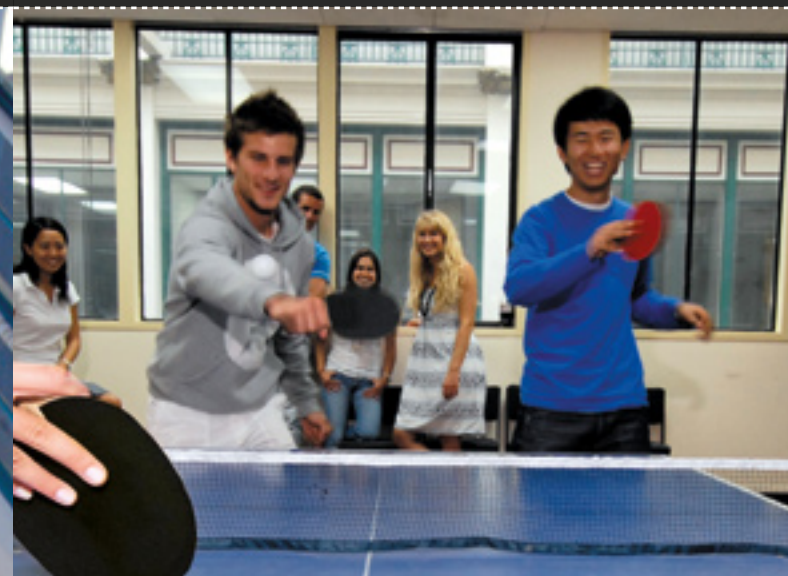
Our teaching methods are based on the most up-to-date communicative methods of teaching English. We have an enjoyable and warm learning environment in our classrooms.



Owners

Maureen Hayes and Cleve Brown are the owners and Directors of Worldwide. They are both from education and teaching backgrounds and so they understand the needs of students very well.

Services & Facilities



Services

- Counselling support staff for all students
- Airport transfer service arranged
- Free further study counselling and placements
- Fax service
- Mail service
- Free local telephone calls
- Free Auckland map
- Weekend trips arranged
- Afternoon activities
- Social programme
- Accommodation arranged
- International exams arranged
- Advice on all aspects of study, travel and living in New Zealand.

Facilities

- **Library and Self-Study Centre** – has over 550 ESL readers at 6 different levels, self-study materials for TOEFL, TOEIC, IELTS, BEC, TKT, FCE, CAE and CPE exams, grammar work sheets, listening work sheets with over 200 tapes and 18 listening posts, DVD worksheets with TV monitors and almost 400 DVD's, 4 computers with English language software and CD-Roms as well as 3 EFL subscription magazines, other magazines, newspapers and many reference books
- **Internet Rooms** – free ISDN and WiFi
- **Student Room** – free telephone, kitchen, free tea & coffee, microwaves and dining tables
- **Prayer Room** - a place for all religions
- **Movie Theatre** - shows videos and DVDs through a wide screen projection system with surround sound speakers
- **Recreation Room** with Ping Pong table.

Orientation and Assistance

Before students arrive they will receive their accommodation details and useful pre-arrival information. For students who have booked airport pick-up service, they will be met at the airport and taken to their accommodation. Students will receive a phone call from their counsellor before the first day of school to make sure that everything is OK.

On the first day at school students receive their Study Folder with their Student Handbook. The Folder also has bus timetables, Auckland map, counsellor's card, information on Auckland and their placement tests. The placement tests are in 3 parts. 1) Grammar test 2) Listening test and 3) Interview (speaking test). Before joining classes the students have an orientation.

At lunch time on the first day students meet their counsellor who discusses important information about school and Auckland life as well as helping them with any questions.

The Study Folder is for study materials. It will provide a record of everything a student learns during their time at Worldwide School.



Teachers and Students

Teachers

We believe in International English. Worldwide School of English teachers are from New Zealand, Australia, the USA, Canada, Great Britain and South Africa. Our teachers are all qualified (with TEFL qualifications and University degrees) and are one of our biggest strengths. We are very proud of them.

Students

Worldwide's students are from all over the world: South America, Asia, the Middle East, the French Pacific and Europe. In a year we have students from over 30 different countries. Our minimum age is 18 years old. The average age of our adult students is 26 years old. Our oldest student so far was 77 years old!



Classes



General English

Morning classes

From 9.00 a.m. – 12.15 p.m.
Monday to Friday

1 week is the minimum course length and 48 weeks is the maximum. Our General English course is divided into 7 levels. Students move up when they have passed the level tests. At each level we teach grammar, vocabulary, functions and language skills. We improve students' writing and reading skills. Students also do a lot of listening and speaking practice. Study materials are free.

Afternoon classes

From 1.30 p.m. – 3.30 p.m.
Monday to Thursday

General English afternoon classes have even more speaking and listening. There is a lot of pair and group work, discussions and exercises to improve listening. Your fluency will improve a lot. Study materials are free.

Friday afternoon options

From 1.30 p.m. – 3.30 p.m.

Students can choose to do the Conversation/special topic Class, watch the Movie, take an IELTS or TOEIC practice exam or participate in an activity. The activity option is an extra cost.

Classes

Academic English

Business English

From 1.30 p.m. – 3.30 p.m. Monday to Thursday (with a practice test on Friday)

Business English is offered all year as an afternoon option for upper-level students and introduces students to the basics of professional business communication as well as prepares them 3 times a year for the BEC (Cambridge Business English Certificate) exam.

Cambridge FCE and CAE Preparation Classes

From 9.00 a.m. – 3.30 p.m. Monday to Friday

We guarantee FCE and CAE classes three times during the year.

IELTS

From 9.00 a.m. – 3.30 p.m. Monday to Friday

This class is open to Intermediate to Advanced level students.

The IELTS class at Worldwide School is offered in 8 week cycles. Course intakes are week 1 and week 5 and the minimum booking period is 4 weeks. Students must study fulltime. Students need to pay extra for the IELTS textbook and exam.

TESOL + TKT

The Worldwide School TESOL plus TKT programme aims to:

- Develop students' understanding of TESOL theory and methodology
- Increase students' awareness of current TESOL practice and resources available for language teaching
- Provide students with opportunities to observe qualified and experienced native ESL instructors in the classroom
- Provide students with opportunities to participate in peer observations and team-teaching
- Develop students' knowledge of language and skills specific to the Cambridge TKT examination and practise TKT test tasks

TOEIC

From 1.30 p.m. – 3.30 p.m. Monday to Thursday (with a practice test on Friday)

Worldwide School offers TOEIC preparation classes as part of its afternoon options. The TOEIC exam is produced by ETS and is available at least once a month in Auckland. Worldwide School is a TOEIC testing centre so students can take the TOEIC test at Worldwide. Students need to pay extra for the TOEIC textbook and exam.

Special Programmes

COMBO

With Combo you can study English in up to 4 great locations in New Zealand. Our Combo partner schools are in Napier, Christchurch and Queenstown. Combo means you can study and travel around New Zealand on one programme. We offer free transfers to the other cities for longer-term students.

English PLUS

- **Farm Experience** - experience life on a real NZ farm
- **Farm Holiday** - relax and enjoy a typical NZ farm
- **Internship** - satisfy your requirements by doing a volunteer internship experience with a company in Auckland
- **Working Holiday Visa Support** - for students from countries that have a WHV arrangement with New Zealand
- **International Flight Attendant** - with our partner school
- **Travel and Tourism** - with our partner school
- **Computers/IT** - with our partner school
- **Hospitality/Food & Wine** - with our partner school
- **Au Pair** - for students with a WHV.



Accommodation



COME TO NEW ZEALAND!



How to Enrol

Homestay

Homestays in New Zealand are famous because they are so good. New Zealand people (Kiwis) are friendly, open and kind. Our Homestay Counsellor has visited every home and interviewed every family. Many of our families have hosted our students for many years.

Apartments

For students who prefer more independent accommodation we offer city apartment options. We have single and semi-single apartment options. All apartments are fully furnished and self contained and are close to the school.

- 1) Select the course/courses you want
- 2) Fill in the enrolment form online or send hard copy to us by fax, email or post, or give it to one of Worldwide School's agents
- 3) Wait for the invoice
- 4) Pay the fees and prepare all travel papers such as passport, visa and air tickets
- 5) Pack your bags and COME TO NEW ZEALAND!

For more detailed information about Worldwide please visit our website.

www.worldwideschoolofenglish.com



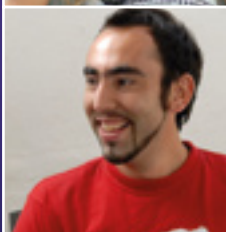
Introducing our featured students:



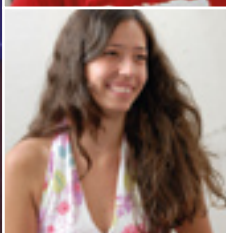
Taichi
from JAPAN



Steffi
from GERMANY



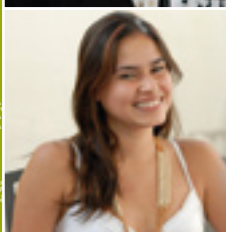
Jose
from CHILE



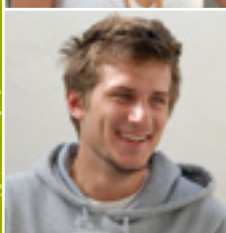
Nathalie
from BRAZIL



Gabriel
from INDONESIA



Paola
from COLOMBIA



David
from BELGIUM



Yi Jung
from KOREA



Worldwide School of English

The Strand Arcade
233 Queen Street, Reception Level 4
PO Box 1802
Auckland
New Zealand

Phone: 64-9 302 5288

Fax: 64-9 302 5299

Email: info@worldwideschoolofenglish.com

Web: www.worldwideschoolofenglish.com

Agent details

