



PORTLAND ENGLISH LANGUAGE ACADEMY

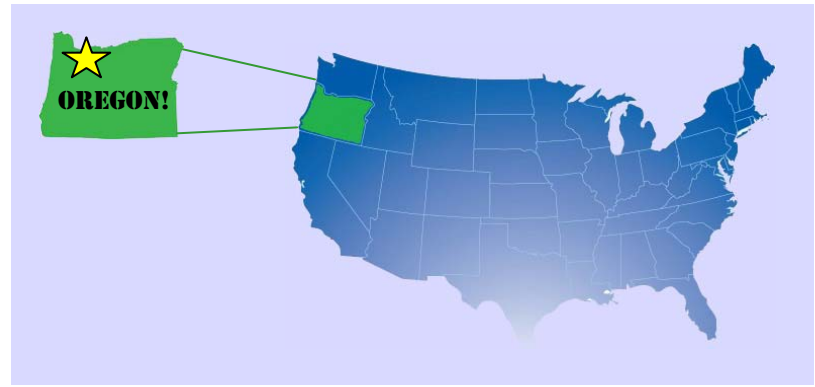
Portland, Oregon USA



www.PortlandEnglish.edu

PORTLAND, OREGON — A GREAT PLACE TO LIVE

- Portland is a **safe, clean, and friendly city**.
- Portland is an affordable city to live and study in!
- Portland has **no sales tax**.
- It is easy to travel around the city. Portland has a **great bus and train system**.
- Portland offers world-class **restaurants, shopping and entertainment**.



PELA IS A GREAT PLACE TO STUDY!

- Study with adult students from **countries all over the world**.
- Tuition starts **as low as \$850** per 4-week term.
- Students receive a **5% tuition discount** when they pay for 2 terms (8 weeks of study) or more at one time.
- A new term **begins every month**. Each term is **4 weeks long**.
- PELA students enjoy **small class sizes** averaging 8-15 students per class.
- Every program has **7 levels of English classes**, for beginner through advanced English speakers.
- PELA offers programs suited for both **F-1 students** and **non F-1 students**.

THE PELA CAMPUS

The Portland English Language Academy is conveniently located in the **heart of downtown Portland, Oregon**. PELA is directly accessible to all the city by MAX light-rail and bus.

AMENITIES ON CAMPUS

- Free Wi-Fi
- Quiet Study Lab
- Student Lounge
- Computer Lab
- Tutoring Center
- Writing Center
- Prayer Areas
- Media Library (500+ movies & TV shows)



ENJOY ACTIVITIES EVERY MONTH AT PELA

Every month, PELA organizes in-school and out-of-school activities for students. Below are examples of some activities PELA has organized in the past few years. Contact PELA to find out about upcoming events!

JANUARY

Bowling Night
Miniature Golf Party
Laser Tag Party



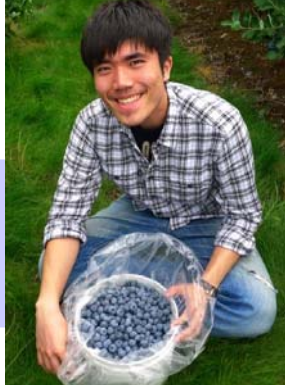
JULY

Beach Trip
PELA BBQ
Trip to Oregon State Fair



FEBRUARY

Scavenger Hunt
Voicebox Karaoke Night
Winterhawks' Hockey Game



AUGUST

Columbia Gorge Tour
Waterfront Park Beer Festival
Board Game Night



MARCH

St. Patrick's Day Pub Crawl
Easter Egg Hunt
Portland Life Photo Contest

APRIL

Tulip Fest/Woodburn Shopping
Earth Day Clean-up
Higher Education Info Fair



SEPTEMBER

Corn Maze Trip
Tour of Local Brewery
Timbers' Soccer Game

OCTOBER

Halloween Costume Contest
Haunted House Tour
NBA Basketball Game



MAY

Prom Dance
Weekend Wine Tasting
Cinco de Mayo Festival

JUNE

Trip to Oregon Zoo
Casino Night
Summer Pub Crawl

NOVEMBER

Holiday Ale Festival
Thanksgiving Lunch
Weekend Wine Tasting

DECEMBER

Christmas Party
Peacock Lane Walking Tour
Zoolights Night Tour



Visit us on Facebook at
www.facebook.com/portlandenglish
for photos of past events, upcoming events & announcements!



TAKE THE TOEIC TEST AT PELA!



The Portland English Language Academy is the only TOEIC testing center in Portland. The TOEIC Listening & Reading Test is given at our school each month.

TAKE THE IELTS TEST AT PELA!



The Portland English Language Academy is also an official IELTS Test Center. PELA administers IELTS tests 3 times each month.

PRACTICE ENGLISH OUTSIDE OF CLASS

Enhance your study of English at the Portland English Language Academy by participating in activities outside the classroom

VOLUNTEER THROUGHOUT PORTLAND!



The **Volunteer Program** can be added on to any English program!

Students will volunteer 4 hours each week at various locations around Portland. New volunteer opportunities are added to our volunteer calendar every month!

Students will gain experience with American lifestyles and daily culture as they practice their English in a variety of different settings.

Volunteer positions are not paid and may require intermediate or higher English ability.



TUTORING CENTER

PELA's teachers host a Tutoring Center, where you can get help with any questions you have about English or class assignments.

There is no need to schedule an appointment, just come in!



CONVERSATION GROUPS

Conversation Groups meet each week and are open to all students who are interested in practicing their conversational English in a fun, relaxed environment. Conversation groups are led by native English speakers.



WRITING CENTER

At PELA's Writing Center, you meet one-on-one with a PELA teacher to work on your writing.

You get to schedule the day and time you want to meet!



CONDITIONAL ADMISSIONS

PELA is proud to offer conditional admission pathways into one of our partner schools to qualifying students who wish to receive their bachelor's degree or master's degree at a U.S. college or university.



Marshall University

Conditional Admissions mean that a university or college will lower its TOEFL or IELTS score requirement for PELA students or waive its TOEFL or IELTS requirement altogether.

Improving your English language skills is essential to receiving the TOEFL or IELTS score needed to gain acceptance into a college or university.

Conditional Admission is a smart and effective way for international students to gain acceptance into a U.S. college or university .

CONDITIONAL ADMISSIONS THROUGH PELA

- Students must be a current PELA student and complete our highest class level (Level 6) in their English language program with a letter grade of B (3.0 or 80%) or better.
- PELA offers conditional admissions pathways into the following U.S. schools: Colorado State University, Marshall University, Oregon State University, Southwestern Oregon Community College, and the University of South Florida.



PATHWAY PROGRAMS



UNDERGRADUATE PROGRAM REQUIREMENTS

- TOEFL as low as 60 or IELTS as low as 5.0
- PELA Level 6 Grade Point Average of 3.0 (80%)
- No SAT, GRE or GMAT needed

GRADUATE PROGRAM REQUIREMENTS

- TOEFL as low as 65 or IELTS as low as 5.5
- PELA Level 6 Grade Point Average of 3.0 (80%)
- GRE or GMAT usually not required until end of the first year of study

Colorado State University



UNIVERSITY OF
SOUTH FLORIDA



Oregon State
UNIVERSITY



Colorado
State
University



MARSHALL
UNIVERSITY.

CHOOSE FROM THESE ENGLISH PROGRAMS

INTENSIVE ENGLISH

- Quickly improve your English communication and conversation skills.
- Obtain a high level of English in a short amount of time.
- Prepare yourself to use English in a work, school or social environment.

20 Class hours per week
20-23 Program hours per week

OPTIONAL Weekly Activities:
2+ hours of Conversation Group
1 hour of Conversation Partner

Intensive English is a 4-week program available to students with an F-1 (student) visa

	Focused Skills Classes 10 hours per week		Communication Classes 10 hours per week
Monday	Listening & Speaking	Writing & Grammar	Integrated Skills
Tuesday	Reading & Vocabulary	Pronunciation	Grammar for Communication
Wednesday	Listening & Speaking	Writing & Grammar	Integrated Skills
Thursday	Reading & Vocabulary	Pronunciation	Grammar for Communication
Friday	Listening & Speaking	Writing & Grammar	Integrated Skills

The **Intensive English Program** is our most popular program. It lets you focus on specific English skills and your overall communication skills.

ACADEMIC ENGLISH

- Practice college-level writing and grammar styles.
- Learn about academic vocabulary and topics.
- Prepare yourself to use English in academic presentations.

20 Class hours per week
20-23 Program hours per week

OPTIONAL Weekly Activities:
2+ hours of Conversation Group
1 hour of Conversation Partner

Academic English is a 4-week program available to students with an F-1 (student) visa

	Academic Preparation 10 hours per week	Academic Preparation 10 hours per week
Monday	Reading, Vocabulary & Speaking	Writing & Grammar
Tuesday	Reading, Vocabulary & Speaking	Writing & Grammar
Wednesday	Reading, Vocabulary & Speaking	Writing & Grammar
Thursday	Reading, Vocabulary & Speaking	Writing & Grammar
Friday	Reading, Vocabulary & Speaking	Writing & Grammar

The **Academic English Program** will help high-intermediate to high level students learn college-level vocabulary and grammar, as well as introduce you to a variety of academic topics.

SEMI-INTENSIVE ENGLISH

- Quickly improve your English communication and conversation skills.
- Obtain a high level of English in a short amount of time.
- Prepare yourself to use English in a work, school or social environment.

17 Class hours per week
17-20 Program hours per week

OPTIONAL Weekly Activities:
2+ hours of Conversation Group
1 hour of Conversation Partner

Semi-Intensive English is a 4-week program available to students without an F-1 (student) visa

	Focused Skills Classes 10 hours per week*		Communication Classes 10 hours per week*
Monday	Listening & Speaking	Writing & Grammar	Integrated Skills
Tuesday	Reading & Vocabulary	Pronunciation	Grammar for Communication
Wednesday	Listening & Speaking	Writing & Grammar	Integrated Skills
Thursday	Reading & Vocabulary	Pronunciation	Grammar for Communication
Friday	Listening & Speaking	Writing & Grammar	Integrated Skills

* For **Semi-Intensive Programs**, students will choose a mix of **Focused English Skills** or **Communication Skills** classes. The number of classes you choose is determined by the Program. This will bring the total weekly classroom hours to under 18 hours, as required for students not studying with an F-1 student visa. The skills taught in the classes you drop will be covered in other classes. Students choose which classes to take after they arrive at PELA.

Add *TEST-PREPARATION* or *VOLUNTEERING* to any English program!

You can add Volunteering or any Test-Preparation class to your English Program. It is even possible to add more than one test preparation class to any English Program!

+ TOEFL IBT PREPARATION

- Build your skills in finding information in TOEFL reading passages.
- Learn how to hear clues in TOEFL conversations and lectures.
- Practice useful phrases and grammar for the TOEFL speaking tasks.
- Learn how to organize TOEFL writing tasks.

+5 Class hours per week

+ IELTS PREPARATION

- Build your skills in finding information in IELTS reading passages.
- Learn how to hear clues in IELTS conversations and lectures.
- Learn how to clearly organize IELTS writing tasks.
- Become comfortable with the IELTS speaking section.

+5 Class hours per week

+ TOEIC PREPARATION

- Build your skills in finding information in TOEIC texts and sentences.
- Learn how to hear clues in TOEIC conversations and talks.
- Strengthen your knowledge of Business English.

+5 Class hours per week

+ VOLUNTEERING

- Gain confidence speaking English with Americans outside of school.
- Experience American life-styles and daily culture.
- Prepare yourself to use English in a work, school or social environment.

+4 hours of Volunteering

+1 hour Volunteering & Culture Class

MORNING or
AFTERNOON classes?
You choose!

Students in any program may choose between studying either morning classes (**9:00 AM – 12:50 PM**) or afternoon classes (**1:00 PM – 4:50 PM**), or a mix of both.



TO APPLY TO PELA

Visit the PELA website: www.portlandenglish.edu or contact us at apply@portlandenglish.edu

OREGON IS A PLACE OF NATURAL



Along the **Oregon Coast**, there are hundreds of miles of scenic views, with many tourist destinations, from a 200-year old fort to natural sea lion caves.



In the **Columbia Gorge & Hood River** are many waterfalls and trails to enjoy an afternoon of driving or hiking.



Oregon is known for its natural beauty. On a **diverse climate** in all the United States. Oregon has **deserts**, **ocean beaches** and **snow-covered** mountains.

There are so many places to visit in Oregon.

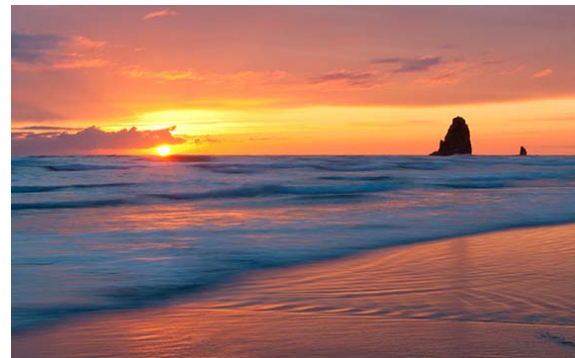


Near Portland are over **100 Wineries & Beer Breweries**, which offer both delicious drinks and amazing views of the countryside.

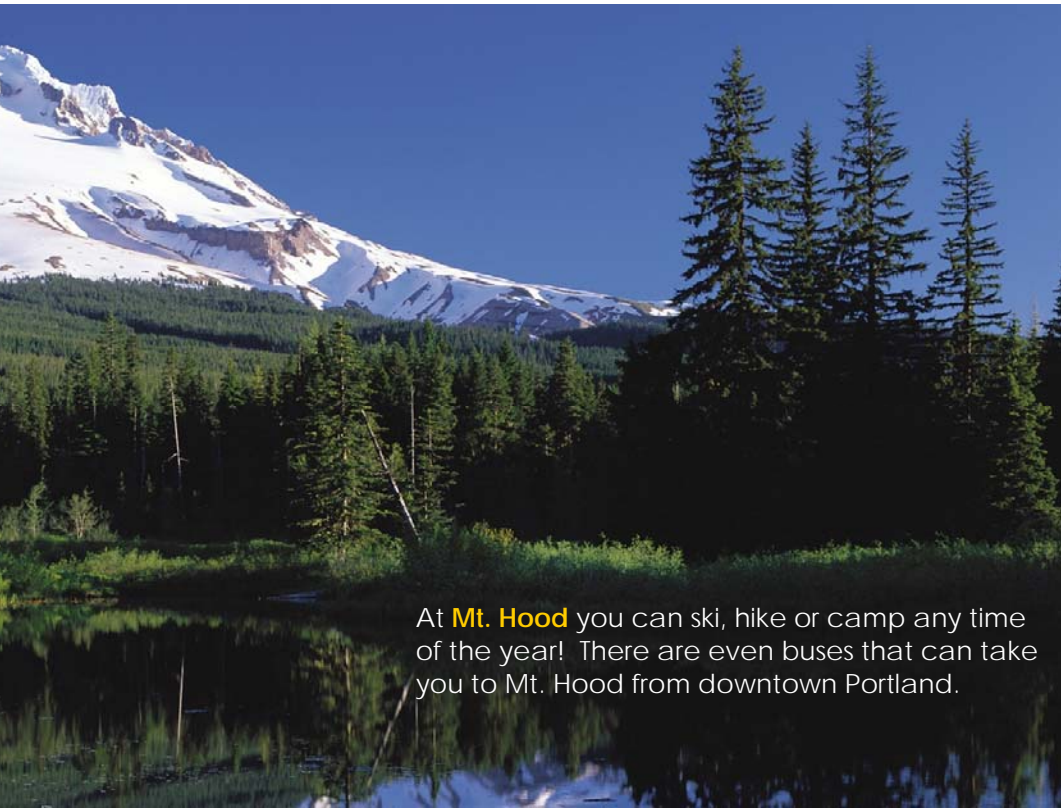


I liked everything about Portland! It has friendly people and beautiful nature. I could take trips to the mountains, Multnomah Falls and the Pacific Ocean. In Portland I could go to Washington Park, the Japanese Garden, and OMSI.

-Svetlana, Czech



BEAUTY & EXCITING ADVENTURES!



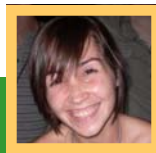
At **Mt. Hood** you can ski, hike or camp any time of the year! There are even buses that can take you to Mt. Hood from downtown Portland.



In **Eastern Oregon** you can do many outdoor activities like rock climbing, camping, skiing, horse-back riding, and whitewater rafting.

Oregon is the state with the **most** Oregon has **cool rainforests** and **hot red mountains**.

Visit and sightsee in Oregon!



When I was in Portland I did a lot of hikes in many different and beautiful places! I enjoyed getting to know Portlanders, too. Because of where Portland is located, it was easy to take trips to other cities on the West Coast, as well as the Olympic Peninsula, Multnomah Falls, and Crater Lake.

—Judith, Spain



In **Southern Oregon** are unusual landmarks, like Crater Lake and the Oregon Caves, along with the nationally-known Oregon Shakespeare Festival.

PORTLAND IS A FUN PLACE TO LEARN AND LIVE!



Warrior Dash



Dragon Boat Racing



Soapbox Derby



Rose Festival



Trailblazers

Timbers

Winterhawks



Science Museum



Oregon Zoo

Every month, Portland comes alive with **cultural festivals** or parades, celebrating the diversity of our community.



Sand Castle Contest



Zombie Walk



Oregon State Fair



Naked Bike Ride



Christmas Festival of Light



Mississippi Street Fair

HOUSING PLACEMENT OPTIONS

Enrich the time you study English at the Portland English Language Academy by letting us arrange for you a Homestay or a room in the Student House.

HOMESTAYS

Students may apply for a homestay placement during their stay in Portland. A homestay is a great way for students to experience American culture and life in Portland while practicing their English skills and making life-long friends.

We carefully select each homestay family before placing students in a home. All PELA host families are kind and friendly, with clean and safe homes. In a homestay, each student will have a private, furnished bedroom.

All homestays provide breakfast and dinner as part of the homestay cost. All homestays provide free internet service for students. Homestays are an average of 40 minutes away from school by bus or train.

STUDENT HOUSE

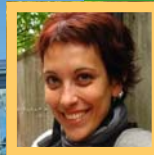
In the International Student House, students share a large, residential house with other international students. There is an American house manager who also lives at the house. Students may choose to have a single, private room, or share a double-occupancy room with a roommate.

The International Student House is located in beautiful Northwest Portland, near the "Northwest 23rd" neighborhood. This area is full of fine dining restaurants, boutique shopping, cafes, bars. The Student House is within walking distance of two grocery stores.

Because the Student House is very popular, it is recommended to apply for a room at the Student House at least 8 weeks (2 months) before arrival. Students who are not placed in the Student House may choose to be placed in a homestay instead.

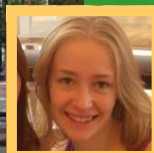
AN IMPORTANT NOTE ABOUT HOUSING PLACEMENT

Please note that housing placement is not guaranteed. It is strongly recommended that students interested in housing apply at least 8 weeks (2 months) before arrival. Prompt submission of the required documents, information and housing fees will assist PELA in placing students in a homestay or the Student House.



Living with my host mother was a wonderful experience. We went to the theater, played board games, and had interesting conversations at home, and even did yoga classes together. We are now friends and I've been visiting her even after I left. Everything was great!

– Maja, Serbia



I have six housemates at the Student House, but I have my own room. Not only can I study English, I can learn international cooking from my roommates, and I learn about different countries and cultures.

– Aurelie, France



PORTLAND ENGLISH LANGUAGE ACADEMY

425 SW Washington Street
Portland, Oregon 97204 U.S.A.
Phone: 503-226-1656
Fax: 503-226-1244

apply@PortlandEnglish.edu
www.PortlandEnglish.edu



*Find out more about life in
Portland & Oregon!*



Accredited by



Commission for English Accreditation