



English
Language
Courses for
Adults

General
Information
Prospectus



Study English
Language in
Brighton &
Hove

INTERACTIVE ENGLISH LANGUAGE SCHOOL

www.interactive-english.com

ENGLISH **UK** 

Accredited by the



INTERACTIVE ENGLISH
LANGUAGE SCHOOL
BRIGHTON & HOVE



CONTENTS

- 03...Welcome to Interactive English
- 04...Language Courses
- 08...Language Levels
- 09...Accommodation
- 11...Brighton & Hove
- 12...Activities & Excursions
- 13...Useful Information
- 14...Important details

LANGUAGE COURSES

- 04...General English Courses
- 05...FCE Exam Preparation Course
- 06...CAE Exam Preparation Course
- 06...IELTS Exam Preparation Course
- 07...BEC Exam Preparation Course
- 07...One-to-One lessons
- 07...Tailor-made courses

STAY IN TOUCH

INTERACTIVE ENGLISH Language School
94 Church Road, Brighton & Hove
East Sussex, BN3 2EB
United Kingdom

+44(0)1273 202 081
info@interactive-english.com
www.interactive-english.com
InteractiveEnglishLanguageSchool

WELCOME TO INTERACTIVE ENGLISH

Interactive English Language School is a family run, British Council accredited school in the heart of Brighton and Hove, United Kingdom.

Just 50 minutes away from London but based on the seaside, it makes a perfect location both for studies and holiday. Our two schools are located on the main bus route some 300 meters away from each other and very close to all local amenities. A 20 min walk will take you to the centre of Brighton and award winning beaches are just down the road. Our friendly English language school has about 150 students of all ages from 18 to 74, from over 30 different countries.

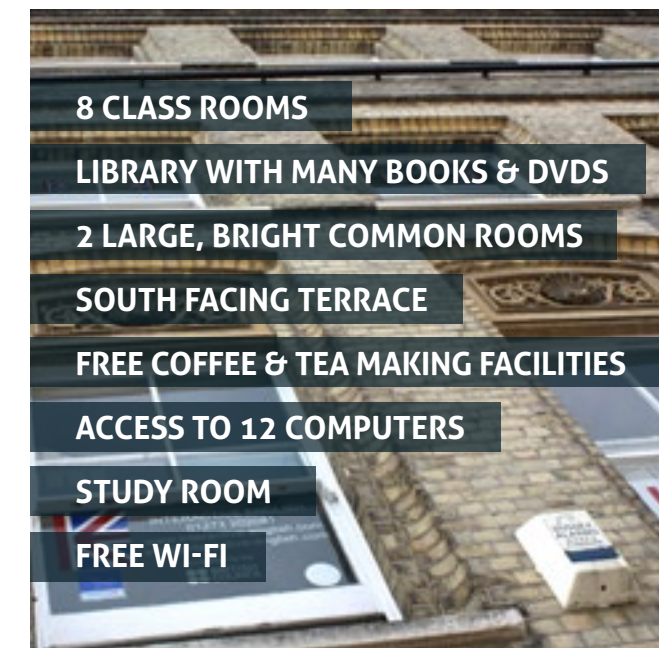
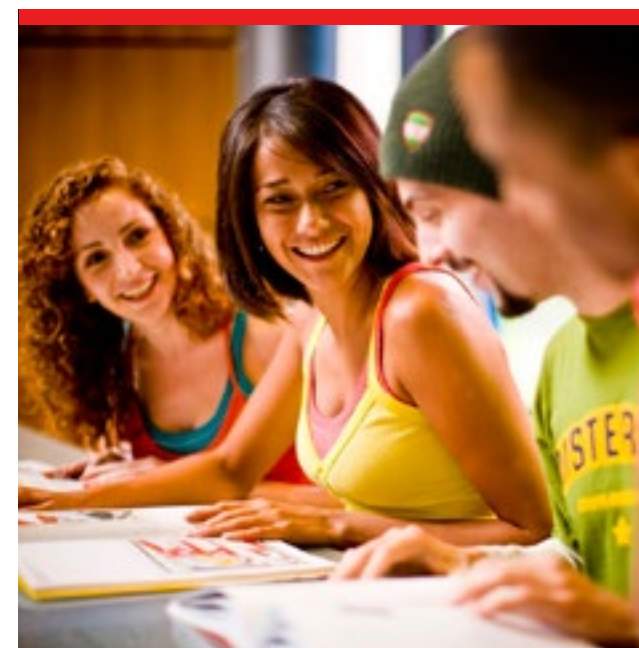
KEY FACTS

- A friendly, caring and safe learning environment
- Wide variety of English language courses for adults
- Experienced and professional native teachers
- Over 30 different nationalities every year
- Great location, close to the centre of the city (20 min walk), and 50 min by train to London
- Number of students (peak season): 160
- Number of students (low season): 80
- Average age 25
- Minimum age: 18
- Average class size 9 (max 15)
- Courses starting every Monday

SCHOOLS FACILITIES

Interactive English operates from two sites, some 300 meters away from one another. Both are located on a main bus route, near the centre of the town (20 minutes by walk). Each school has a large cozy lounge with computers and access to the internet all day as well as refreshments including fresh coffee and tea for our students for free.

We have 4 classrooms on each site, fully equipped with media systems and up to 15 students in the class, but with an average of 9.



LANGUAGE COURSES

All of our full-time courses consist of at least 15 hours per week classroom time with 10 hours per week of home study. All classes are conducted by qualified teachers using the most up to date materials and methods, and are focused on the needs and abilities of the students as individuals as well as a group. Because the classes are small, the maximum number of students is 15, but on average 9, all students have a good deal of individual attention and plenty of opportunity to practice their speaking in class.

Course intensity varies from 15 to 30 lessons per week to give you the opportunity to choose a course that perfectly suits your learning needs and daily routine.

GENERAL ENGLISH PRE-INTERMEDIATE LEVEL

This course is for students who have a basic knowledge of the English language. The courses focus on **grammar**, **reading**, as well as **speaking** and **writing** about everyday topics.

These courses are for students who have some fluency in English, but who still have problems with basic grammar and little confidence in using English.

We would expect a student to take about 12 weeks to complete this level.

COURSE SUMMARY

HOURS PER WEEK: 15

TIMETABLE: Afternoon shift 13.15-16.30
Monday to Friday

LEVEL: Pre Intermediate A2

MINIMUM AGE: 18

MAX CLASS SIZE: 15 (in busy times up to 17 for a short periods of time)

AVERAGE CLASS: Size 9-12

START DATE: Any Monday

LENGTH OF COURSE: Minimum 1 week

OPTIONS: Cannot be combined with other courses as level is too low

SUITABLE FOR: All students and professionals

GENERAL ENGLISH INTERMEDIATE LEVEL

This is for students who have a good knowledge of the English language. The courses focus on **grammar**, **reading**, **speaking**, **writing** and helping students to **speak with more confidence**.

These courses are for students whose English allows them to communicate with others quite well much of the time, but who still make frequent mistakes so that there are regular misunderstandings.

We would expect a student to take about 12 weeks to complete this level.

COURSE SUMMARY

HOURS PER WEEK: Choose from 15, 21, 24, 27 or 30

TIMETABLE: Morning shift 9.15-12.30 or Afternoon shift 13.15-16.30, Monday to Friday

LEVEL: Intermediate B1

MINIMUM AGE: 18

MAX CLASS SIZE: 15 (in busy times up to 17 for a short periods of time)

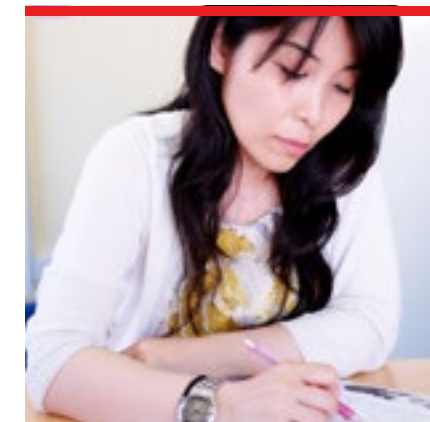
AVERAGE CLASS: Size 9-12

START DATE: Any Monday

LENGTH OF COURSE: Minimum 1 week

OPTIONS: Combine with FCE or IELTS classes

SUITABLE FOR: All students and professionals



FCE EXAM PREPARATION COURSE

The course is 15 hours of lessons a week. Leading to the **Cambridge First Certificate** in English, this course teaches and practises English in the context of the five exam papers - **Reading**, **Writing**, **Use of English**, **Listening** and **Speaking**. This course is for adult students who are at an upper-intermediate to advanced level, and who now wish to focus on increasing their accuracy and general competence in English and to prepare for an externally validated examination – **the Cambridge First Certificate in English**.

COURSE SUMMARY

HOURS PER WEEK: Choose from 15, 21, 24, 27 or 30

TIMETABLE: Morning shift 9.15-12.30 or Afternoon shift 13.15-16.30, Monday to Friday

LEVEL: Intermediate B2

MINIMUM AGE: 18

MAX CLASS SIZE: 15 (in busy times up to 17 for a short periods of time)

AVERAGE CLASS: Size 9-12

START DATE: Any Monday

LENGTH OF COURSE: Minimum 1 week

OPTIONS: Combine with IELTS or CAE classes

SUITABLE FOR: All students and professionals



CAE EXAM PREPARATION COURSE

The course is 15 hours of lessons a week. Leading to the **Cambridge Certificate in Advanced English**, this course teaches and practises English in the context of the five exam papers: **Reading, Writing, Use of English, Listening** and **Speaking**. It is for students who are preparing for the **Cambridge Certificate in Advanced English (CAE)** examination.

This course is for adult students who are at an upper-intermediate to advanced level, and who now wish to focus on increasing their accuracy and general competence in English.



COURSE SUMMARY

HOURS PER WEEK: Choose from 15, 21, 24, 27 or 30

TIMETABLE: Morning shift 9.15-12.30

LEVEL: Intermediate C1

MINIMUM AGE: 18

MAX CLASS SIZE: 15 (in busy times up to 17 for a short periods of time)

AVERAGE CLASS: Size 9-12

START DATE: Any Monday

LENGTH OF COURSE: Minimum 1 week

OPTIONS: Combine with IELTS or FCE classes

SUITABLE FOR: All students and professionals

IELTS EXAM PREPARATION COURSE

This course leads to the **Cambridge International English Level Testing System** examination. **IELTS** is often required for those who wish to attend a course in tertiary education in **Britain, Australia, New Zealand**, the **USA, Canada** and some institutions in **Singapore**.

The course is for students with a higher level of English who are preparing for the academic IELTS examination.

The course consists of 15 hours of lessons a week. It is taught in the context of the four exam papers - **Reading, Writing, Listening** and **Speaking**.

If you want to **study at university in the UK**, you will almost certainly need to take the **IELTS exam** in order to show that you have the necessary level of English, you may also need to take the exam to show your level of English if you intend to live permanently in an English speaking country. On average our students achieve 6.5 in IELTS exams.

COURSE SUMMARY

HOURS PER WEEK: Choose from 15, 21, 24, 27 or 30

TIMETABLE: Morning shift 9.15-12.30 or Afternoon shift 13.15-16.30, Monday to Friday

LEVEL: Intermediate B2-C1

MINIMUM AGE: 18

MAX CLASS SIZE: 15 (in busy times up to 17 for a short periods of time)

AVERAGE CLASS: Size 9-12

START DATE: Any Monday

LENGTH OF COURSE: Minimum 1 week

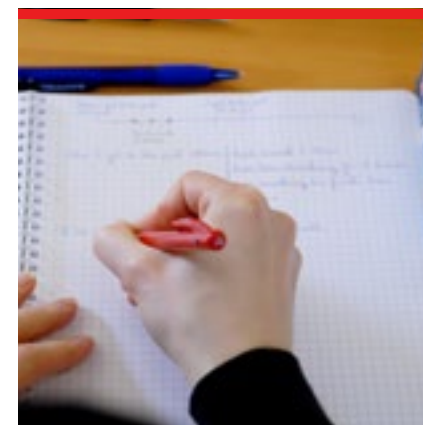
OPTIONS: Combine with FCE or CAE classes

SUITABLE FOR: All students and professionals

BEC EXAM PREPARATION COURSE

By the end of the BEC – Exam Preparation course you will be able to:

Discuss business topics with ease, express opinions and give appropriate reasons, understand and comment on the opinions of others, describe and comment on topics such as branding, globalisation, advertising, and travel, take part in meetings, negotiations, socialise in a work setting, and give presentations, speak clearly and naturally so that people understand you, understand the main points and details of authentic written business texts, summarise texts in speech and writing, recognize and use the appropriate format and language for different written text types. **(Please ask for availability)**



ONE TO ONE COURSE

Individual lessons are all 60 minutes long and the content can be negotiated between student and teacher. This gives students an opportunity to work on areas which are of particular interest or concern.

The Academic Director timetables the individual classes and the times may vary each week but they are usually in the afternoons. To cancel or alter the times of these classes the student must give at least 48 hours' notice in writing.



TAILOR MADE COURSE

In addition to the courses that we offer, we can design closed group courses that specifically meet your needs. Some recent examples include.

- Medical English
- PET or BEC preparation for High School students (PON)
- General English for Secretaries and receptionists

For more details visit: www.interactive-english.com



LANGUAGE LEVELS

Please check the English language level requirements for each course before completing the enrolment form.

CEFR Level A1 – Beginner - not available
CEFR Level A2 – Elementary - Pre-Intermediate
CEFR Level B1 – Intermediate
CEFR Level B2 – Upper Intermediate for FCE and IELTS courses
CEFR Level C1 – Advanced for CAE and IELTS courses
CEFR Level C2 – Proficiency - not available

Please see below a CEFR Table:

CEFR level	Interactive English level	IELTS	Cambridge exam	Business English Certificate (BEC)	ALTE Levels	BULATS (Score)	TOEFL iBT Total
C2 - Mastery	Proficiency / Advanced	IELTS 9.0	CPE	-	Level 5	90-100	-
		IELTS 8.5					
C1 - Effective Operational Proficiency	Advanced / Upper Intermediate	IELTS 8.0	CAE	BEC Higher	Level 4	75-89	110-120
		IELTS 7.5					
		IELTS 7.0					
B2 - Vantage	Upper Intermediate / Intermediate	IELTS 6.5	FCE	BEC Vantage	Level 3	60-74	87-109
		IELTS 6.0					
		IELTS 5.5					
B1 - Threshold	Intermediate / Pre Intermediate	IELTS 5.0	PET	BEC Preliminary	Level 2	40-59	57-86
		IELTS 4.5					
A2 - Waystage	Pre Intermediate / Elementary	IELTS 4.0	KET	-	Level 1	20-39	-
		IELTS 3.5					
		IELTS 3.0					
A1 - Breakthrough level	Elementary / Beginner	IELTS 2.0	-	-	ALTE Breakthrough	0-19	-
		IELTS 1.0					

A1: Can understand and use familiar everyday expressions and very basic phrases aimed at the satisfaction of needs of a concrete type. Can introduce him/herself and others and can ask and answer questions about personal details such as where he/she lives, people he/she knows and things he/she has. Can interact in a simple way provided the other person talks slowly and clearly and is prepared to help.

A2: Can understand sentences and frequently used expressions related to areas of most immediate relevance. Can communicate in simple and routine tasks requiring a simple and direct exchange of information on familiar and routine matters. Can describe in simple terms aspects of his/her background, immediate environment and matters in areas of immediate need.

B1: Can understand the main points of clear standard input on familiar matters regularly encountered in work, school, leisure, etc. Can deal with most situations likely to arise while travelling in an area where the language is spoken. Can produce simple connected text on topics which are familiar or of personal interest. Can describe experiences and events, dreams, hopes and ambitions and briefly give reasons and explanations for opinions and plans.

B2: Can understand the main ideas of complex texts on both concrete and abstract topics, including technical discussions in his/her field of specialisation. Can interact with a degree of fluency and spontaneity that makes regular interaction with native speakers quite possible without strain for either party. Can produce clear, detailed text on a wide range of subjects and explain a viewpoint on a topical issue giving the advantages and disadvantages of various options.

C1: Can understand a wide range of demanding, longer texts, and recognise implicit meaning. Can express him/herself fluently and spontaneously without much obvious searching for expressions. Can use language flexibly and effectively for social, academic and professional purposes. Can produce clear, well-structured, detailed text on complex subjects, showing controlled use of organisational patterns, connectors and cohesive devices.

C2: Can understand with ease virtually everything heard or read. Can summarise information from different spoken and written sources, reconstructing arguments and accounts in a coherent presentation. Can express him/herself spontaneously, very fluently and precisely, differentiating finer shades of meaning even in more complex situations.

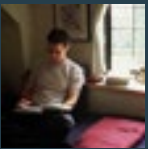
Most Interactive English students take an average of 12 weeks to complete a level. Reaching the exam standard often takes longer.

ACCOMMODATION IN UK


In order to get the most from your stay in the UK, we recommend that you book accommodation in a **homestay** so that you can get a feel for life in the UK. We will organise a homestay for you so that you can move in as soon as you arrive. There are a number of packages available: **self catering** or **half board**, **private room** or **sharing**, and these come at varying costs. Alternatively, you could stay in a student house, sharing accommodation with other international learners of English, but you will need to arrange this independently - please check more information below. If you wish to arrange accommodation by yourself, please ask at the reception for **an advice**. You can find a room to rent, a flat to rent or even bed and breakfast or a hostel.

ACCOMMODATION TYPES

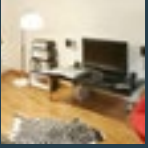
HOMESTAY ACCOMMODATION




STUDENT HOUSE ACCOMMODATION



RENTING FLAT




HOTELS AND BAD & BREAKFAST'S



FOR MORE DETAILS VISIT

WWW.INTERACTIVE-ENGLISH.COM



HOMESTAY

If approached with the right attitude (both by the host and the student), staying in homestay accommodation can be a fantastic way to improve your English, learn about British culture, and possibly make new friends. We try very hard to make sure that all of our homestay accommodation is clean, comfortable, and friendly. We inspect all accommodation and interview the hosts before we accept them for our students.

Britain is a multi-cultural and multi-ethnic community, and our people have tastes that reflect our long history of immigration. As well as traditional 'British' food, you are likely to be offered Italian, Indian, Chinese, and many other different styles of cuisine. And we don't usually stop everything at 5 o'clock for a cup of tea.

The population of Britain is made up of people of all races, ethnicities and religions, so you may be living with people who don't look like what you might imagine British people to be. Some homestay providers are not of English origin but all speak English to high standard.

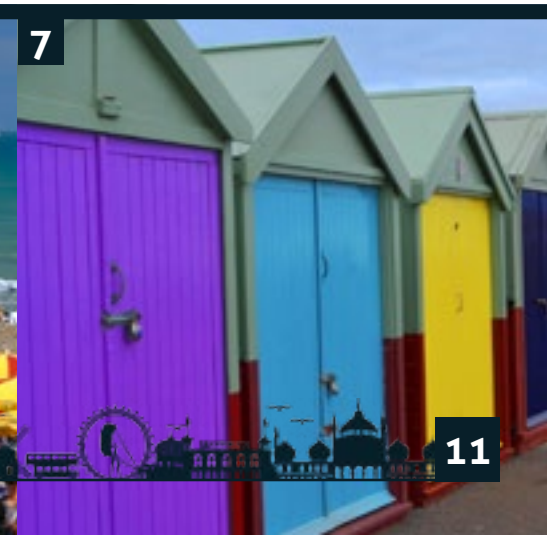
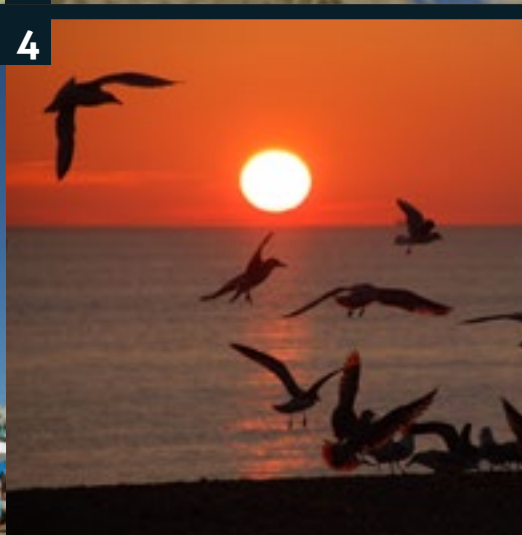
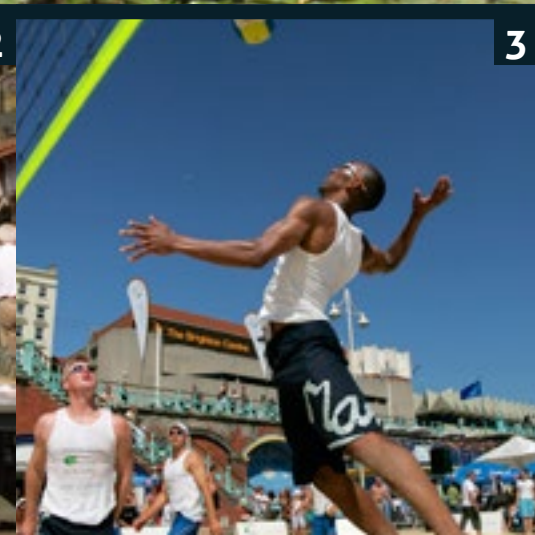
It is also possible that your homestay 'family' is not similar to typical families in your country: it may be made up of two parents with a number of children, or it may just be one person living alone, or anything in between.

We try to match students with homestays and to find the right homestay for everyone. It is important to book early and to tell us about your requirements e.g. in the areas of diet, smoking, children and pets.





“ Study English in Brighton & Hove ”



BRIGHTON & HOVE

The city of Brighton & Hove, is located on the South coast of England just 80 km from London, with the South Downs National Park to the north and the sea to the south.

Pubs: These are very often the centre of social life. You can find pubs on almost every corner in Brighton and Hove and they may vary from wine bars, traditional pubs and others. It is forbidden to sell alcoholic drinks to persons below 18 years of age. Very often you will need to show proof of age (national id card or passport) before entering pubs and bars.

Theatres: You can find many theatres and places with live performances all year around.

Club Life: Brighton has many clubs varied from discotheques to jazz clubs. Open every day of the week and very often with theme nights. Most clubs do not have dress codes, but it is wise to check beforehand, and very often there is an entrance fee. Clubs are open usually until 2.00 or 3.00 am.

Restaurants: There are hundreds of different restaurants around with the most diverse variety of world cuisines.

Festivals: There are many festivals in Brighton happening all year around. *The Brighton Fringe Festival, Brighton & Hove Food and Drink Festival, Brighton Festival, Pride Festival*, any many others.

Shopping: You can enjoy Brighton's unique shopping experience by wandering through the 17th century **Brighton Lane** or you can relax alfresco in Brighton Square, right in the heart of The Lanes. **Brighton's North Laine** has a laid-back bohemian charm and over 300 unique, individual and quirky shops. For a taste of high-street shopping, Brighton's **Churchill Square** has over 80 stores.

Tourist attractions: Since Regency times, Brighton has been a pleasure ground for visitors, with a wealth of attractions full of charm, style and eccentricity. From the unique **Royal Pavilion** to the **Victorian Brighton Pier**, the **Volks Railway** to **Brighton & Hove Museums**, Brighton's attractions are a mix of heritage, seaside fun and cultural experiences.

Art: With unique and diverse population of artists, photographers, dancers and actors, Brighton is one of the most creative cities in the UK. From quirky performance pieces to cutting edge art events, Brighton offers a creative cool that is hard to beat.

What's on?
Visit: www.interactive-english.com

FACTS

POPULATION: 270 000+
AREA: 87.54 km²
CITY STATUS: Since 2000

Over 8 million people visit Brighton each year.

On a night it takes 62,000 light bulbs to illuminate Brighton Pier.

Brighton Marina is one of the largest in the Europe, it provides berthing for more than 2000 yachts.

Brighton is often referred to as 'London By The Sea'.

Volks Railway was opened in 1883 and is Britain's oldest public electric Railway.

The Sea Life Centre is the worlds oldest operational Aquarium in the world.

The Duke Of York Cinema is the oldest operating picture house in the country.

Brighton has long been recognised as one of the most eco-friendly places in the UK.

Brighton was voted the 'UK's happiest place to live' and ranked in the top 3 safest cities in England. (The Complete University Guide, July 2011)

Photos:

1. Brighton Royal Pavilion
2. North Lanes - Shopping & Food
3. Beach Activities
4. Brighton Sunset
5. Brighton Marina
6. Brighton Pier
7. Hove Beach Huts

ACTIVITIES & EXCURSIONS

Our students, and the staff, enjoy a wide variety of activities outside of school.

Including **paintball, bowling, picnics, dog racing**, and of course going to the pub! On special occasions, we have parties celebrating Christmas, Halloween and anything else we can think of. Like everything at our school, our activities are fairly relaxed, and usually come about from suggestions or requests from our students. Brighton & Hove and the surrounding areas offer a wealth of activities, both outdoors and indoors, and we are always willing to try out almost anything.

While you are here, you should take the opportunity to travel around and see some of the **sights of the UK**, some **famous European cities**, or take in a **West End show**. Our trips are organised by our partners, who offer short trips and excursions to destinations around the UK and in mainland Europe. The trips are very reasonably priced and popular with all our students.

Please be aware that you may require a Schengen visa to travel outside of the UK.

All trips take place at weekends, although some longer ones start on Friday, so that you miss as few lessons as possible.

EXCURSIONS EXAMPLES

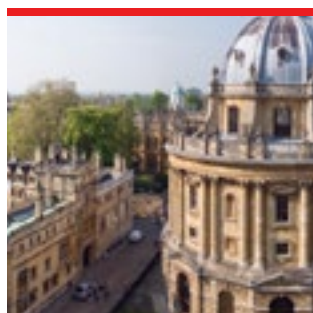
LONDON SIGHTS, SHOPS & MUSEUMS

- Return travel by train & the services of an experienced tour leader
- Guided tour of London's famous sights – including Big Ben, the Houses of Parliament, Westminster Abbey Buckingham Palace and much more...
- The Changing of the Guard Ceremony @ Buckingham Palace
- Visit to Madame Tussauds for photos with the world's famous people (discounted tickets available)
- Free time for Shopping in London's West End
- Optional River Thames Cruise



OXFORD, WINDSOR & ETON

- Return travel by executive coach and the services of an experienced tour leader.
- Visit Windsor, home to Windsor Castle the Queen's weekend residence, for a walking tour of this beautiful town, and neighbouring Eton.
- Changing of the Guard Ceremony outside Windsor Castle.
- Guided tour of Oxford, the 'City of Dreaming Spires'.
- Photostop at Christ Church 'Harry Potter' College, home to England's smallest Cathedral.
- Souvenir hunting in Oxford's famous indoor market.



CAMBRIDGE & GREENWICH

- Return travel by executive coach and the services of an experienced tour leader.
- Guided tour of Greenwich, a UNESCO World Heritage Site
- Photo stop at the Meridian Line, in Greenwich Park
- Souvenir hunting in Greenwich's Saturday market
- Guided tour of Cambridge University including Henry VIII's Trinity College, and King's College Chapel
- Visit the Fitzwilliam Museum (admission free)
- Try 'punting' on the river Cam – chauffeur or self-hire (optional extra charge)



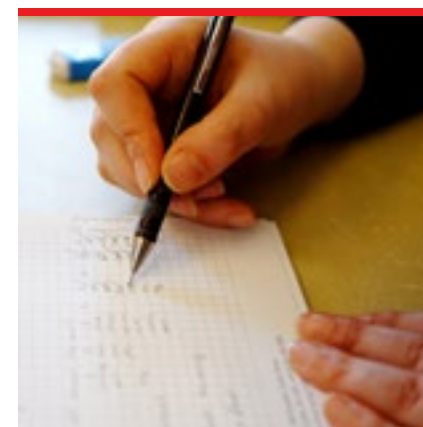
BATH, STONEHENGE & SALISBURY

- Return travel by executive coach and the services of an experienced tour leader
- Visit to Salisbury Cathedral
- Visit to ancient & mysterious Stonehenge (admission included)
- Audio Tour of Stonehenge
- Guided tour of Bath – England's most beautiful city and a UNESCO world heritage site
- Visit Royal Crescent, England's most beautiful street
- Souvenir shopping on the great Pulteney Bridge
- Optional visit to The Roman Baths
- (discounted tickets available)



USEFUL INFORMATION

STUDENT INSURANCE



You are strongly advised to take out insurance in your own country as protection against losing money through cancellation or unexpected termination of your course due to accident, illness or for personal reasons; visit www.Course-U-Can.com

You should also insure yourself for payment of medical expenses for the period of your stay at Interactive English Language School.

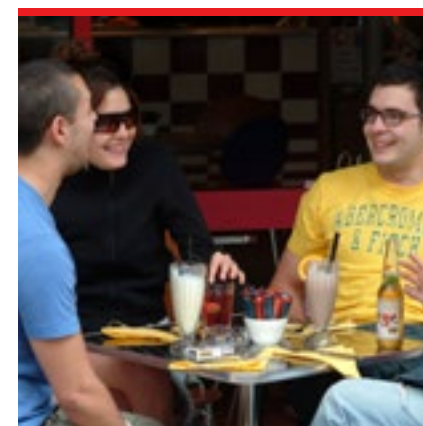
Please note that that Course-u-can is an independent insurance broker and you will need to go to their website to book insurance.

STUDENT VISA

If you are not an ECC citizen you will need a visa to come here. If you are here on a student visa you must be a full time (15 hours per week), daytime student. If you leave school while still on a student visa you will be in breach of your visa conditions and you could be sent home. If you need to extend your visa you will need an enrolment letter from the school and evidence of enough money to support yourself for the time you want to stay. You will also need to prove that your level of English is at least B1 on the CEFR. We can give you the application form and help you to fill it in. See us for more information.



TRANSFER FROM AIRPORT



If you have a choice of arrival airports, please consider the cost and time involved in travelling from the airport to Brighton. For example, if it is a little more expensive to fly to Gatwick Airport than any of the other London airports, bear in mind that it is much cheaper and more convenient to travel from Gatwick to Brighton.

We can book a taxi from the airport or station to take you directly to your accommodation on arrival and from your accommodation on your departure. This needs to be arranged before you depart your country, so contact us if you need this service.

HOLIDAYS IN UK

On public holidays school is closed. Public holidays are: New Year's Day, Good Friday, Easter Monday, The first Monday in May, the last Monday in May, The last Monday in August, Christmas Day & Boxing day.

For more useful information
visit: www.interactive-english.com



IMPORTANT DETAILS



WE ARE SOCIALY ACTIVE

Follow us on:

 Facebook: [/InteractiveEnglishLanguageSchool](#)

 Twitter: [/InteractiveEngl](#)

 Youtube: [/InteractiveEnglishTV](#)

ONLINE SERVICES

Interactive English Language School provides many services online, please visit our website for further details.

✓ English Grammar Test

You can find out your English Level online, go to:
www.interactive-english.com/grammar-test/

⚙ Calculator

You can calculate your course price, go to:
www.interactive-english.com/fees/

📄 Online Application

You can apply online now too, go to:
www.interactive-english.com/application-form/



INTERACTIVE ENGLISH

94 Church Road, Hove, BN3 2EB
East Sussex, England, United Kingdom

Tel : +44 (0) 1273 202 081

email: info@interactive-english.com

visit: www.interactive-english.com

Registered in England No: 7147035
Registered office: 85 Church Road, Hove
East Sussex, BN3 2BB, United Kingdom



INTERACTIVE ENGLISH
LANGUAGE SCHOOL
BRIGHTON & HOVE





INTERACTIVE ENGLISH
LANGUAGE SCHOOL
BRIGHTON & HOVE



STAY IN TOUCH

INTERACTIVE ENGLISH Language School
94 Church Road, Brighton & Hove
East Sussex, BN3 2EB
United Kingdom



+44(0)1273 202 081



info@interactive-english.com



www.interactive-english.com



[InteractiveEnglishLanguageSchool](https://www.facebook.com/InteractiveEnglishLanguageSchool)

Interactive English Language School
is accredited by the British Council
and holds a Tier 4 License from the UK
Border Agency as a Grade 'A' College.

Accredited by the
 **BRITISH
COUNCIL**

ENGLISHUK 