



Net Pacific Group



SUMMER / WINTER GENERAL ENGLISH  
CAMBRIDGE PREPARATION  
JUNIOR ADVENTURE CAMP  
SKI/SNOWBOARD CAMPS

[ihwhistler.com](http://ihwhistler.com)



International  
House  
Whistler



# table of contents

## Mission Statement

International House Whistler provides the highest quality of English language education and outdoor education in a safe natural environment.

We achieve this with a student-centered approach to learning and with teachers who are well-trained in both English language and outdoor education instruction.

## Value Statement

We conduct ourselves ethically and with integrity. We respect individualism, cultural values and the personal growth of students and staff alike. We value harmony and cooperation while supporting each other's creative energies and talents.

## 3 about us

- IH Whistler
- Net Pacific Group
- IH World Organisation

## 4 academic english programs

- Summer English
- Winter English
- Cambridge Preparation

## 6 junior adventure camp

## 8 activities

## 10 accommodation and testimonials

## 11 ski/snowboard camps

# about us

## Whistler, BC, Canada

**P**roudly referred to as the 'Outdoor Adventure Capital of Canada', Whistler is nestled in the Coast Mountains of British Columbia, 120km north of Vancouver and 354km north of Seattle, USA. It lies only 60km inland from the Pacific Ocean.

Whistler Village and its approximately 10,000 permanent and nearly 3000 seasonal residents welcomes over 2 million visitors each year. It is large enough to have all of the amenities of a world-class resort, yet small enough for you to feel its warmth and distinctive hospitality.



## International House Whistler

IH Whistler provides a window on Canadian culture and lifestyle, with easy access to nature and world-class outdoor activities at our doorstep.

Located in North America's #1 resort community, IH Whistler provides the highest quality of English language education and outdoor instruction in a safe and natural environment. Small and friendly with an international feel, IH Whistler is the perfect place to study and play at any time of year!



## Net Pacific Group

With multiple locations in North America, IH allows you to study in different cities (Vancouver, Whistler or San Diego) with one registration fee. Experience the best the west coast of North America has to offer.



## International House World Organisation

International House is a member of the International House World Organisation, an educational trust founded in 1953 by John and Brita Haycraft. Their aim was to raise the standards of language teaching world-wide and this aim has remained central to the organization ever since.

Over fifty years later, the network of schools affiliated with International House has grown to over 150 and are located in more than 50 different countries, creating a truly unique, global organization.

As opposed to a franchise, IH is organized as a charitable trust with member schools under supervision from IH headquarters in London.

International House is committed to ensuring the highest levels of language training and the delivery of excellence both inside and outside the classroom.



# academic english programs



## Summer English

Classes in the summer are designed to provide students with a combination of General English skills such as reading, writing, grammar, listening and pronunciation. Classes often venture outdoors where our trained staff will improve your speaking skills by using nature as a classroom. Topics often include the environment, forestry, climate change and native culture.

Students may choose a full time (25 lessons per week) or part time (15 lessons per week) schedule.

	MON	TUES	WED	THUR	FRI
09:00 - 12:00	Part time and Full time English studies				
12:00 - 13:00	Lunch				
13:00 - 15:00	Full time English studies				
15:00	Optional afternoon and evening activities				

## Winter English

Our winter schedule is designed to accommodate the needs of our students. We schedule classes in the mornings and afternoons so we can double the amount of classes we offer, and keep our class sizes as small as possible.

Our “flip-flop” schedule allows students the opportunity to enjoy skiing/ snowboarding on the mountains daily without compromising their 15 lessons per week of English studies.

We also provide extra tutorials that allow students to study more intensively when they want to and work on specific needs with their teachers in a smaller group setting.

	MON	TUES	WED	THUR	FRI
08:30 - 11:30	English Class	Free Time	English Class	Free Time	English Class
13:00 - 14:00	Tutorial				
14:00 - 17:00	Free Time	English Class	Free Time	English Class	Free Time





## Required Levels

	REQUIRED LEVELS		
	General Integrated English	FCE Preparation	CAE Preparation
Beginner			
Elementary			
Pre-Intermediate A			
Pre-Intermediate B			
Pre-Intermediate Step			
Lower Intermediate A			
Lower Intermediate B			
Lower Intermediate Step			
Mid-Intermediate			
Mid-Intermediate Step			
Upper Intermediate			
Upper Intermediate Step			
Lower Advanced			
Upper Advanced			

## Cambridge Preparation

Cambridge preparation courses at IH Whistler follow the same high standards that International House is known for around the world. With 5 hours of class time a day and our flexible class schedule, students can still join all of the activities they want after class. IH Whistler is proud to be an official Cambridge Testing Centre, allowing students the convenience and comfort of writing their exams in familiar surroundings.

FCE and CAE preparation classes are offered throughout the year. Contact IH Whistler for course schedules.





# junior adventure camp



World renowned for its spectacular scenery, its wide variety of outdoor activities and its safe natural environment, IH Whistler proudly opens its doors to juniors every summer.

With instructors and camp councilors who are highly experienced and qualified, the JAC is designed to improve teamwork, leadership and self-confidence while learning English.

An all-inclusive and fully-supervised program, the JAC uses nature as a classroom and gives students the opportunity to learn new skills in a fun, safe environment.



- **Offered in July & August**
- **The all-inclusive JAC Whistler includes:**
  - Host family or residential accommodation with all meals
  - 2-way airport transfer
  - 24-hour supervision
  - 15 hours of in-class English classes weekly
  - Daily outdoor activities with qualified local guides
- **Special group packages available**



## Sample Calendar

## IHW Junior Adventure Camp

Sunday	TIME	Monday	Tuesday	Wednesday	Thursday	Friday	Saturday
	WEEK 1						
Student arrival & orientation	9:00-12:00	Canada Day Holiday	English Classes	English Classes	English Classes	Camping Return	Vancouver Trip Stanley Park Aquarium Gastown Beach BBQ
Town Tour	13:00-15:00		Interactive English Classes	Interactive English Classes	Overnight Camping Excursion	Scavenger Hunt	
Welcome Game	afternoon/evening		Kayak trip down the River of Golden Dreams	Optional Activities*		Movie Time	
	WEEK 2						
Student arrival & orientation	9:00-12:00	English Classes	English Classes	English Classes	English Classes	Camping Return	The IH Whistler Wacky Sports Day
Town Tour	13:00-15:00	Interactive English Classes	Peak to Peak Gondola & Glacier Hiking Experience	Interactive English Classes	Overnight Camping Excursion	Board Game Tournament	
Welcome Game	afternoon/evening	Wilderness Training II		Optional Activities*		Movie Time	
	WEEK 3						
Student arrival & orientation	9:00-12:00	English Classes	English Classes	English Classes	English Classes	Camping Return	Vancouver Trip Shopping, Kitsilano Beach
Town Tour	13:00-15:00	Interactive English Classes	Whitewater Rafting	Interactive English Classes	Overnight Camping Excursion	Scavenger Hunt	
Welcome Game	afternoon/evening	Wilderness Training III		Optional Activities*		Movie Time	
	WEEK 4						
Student arrival & orientation	9:00-12:00	English Classes	English Classes	English Classes	English Classes	Camping Return	Peak to Peak Gondola & Glacier Hiking
Town Tour	13:00-15:00	Interactive English Classes	Monkido Ziplining & Ropes Course	Interactive English Classes	Overnight Camping Excursion	Board Game Tournament	
Welcome Game	afternoon/evening	Wilderness Training I		Optional Activities*		Movie Time	
	WEEK 5						
Student arrival & orientation	9:00-12:00	English Classes	English Classes	English Classes	English Classes	Camping Return	Vancouver Trip Grouse Mt. Ambleside Beach Games & BBQ
Town Tour	13:00-15:00	Interactive English Classes	Interactive English Classes	Interactive English Classes	Overnight Camping Excursion	Scavenger Hunt	
Welcome Game	afternoon/evening	Wilderness Training II	Kayak trip down the River of Golden Dreams	Optional Activities*		Movie Time	
	WEEK 6						
Student arrival & orientation	9:00-12:00	BC Day Holiday	English Classes	English Classes	English Classes	Camping Return	Excursion to Horseshoe Bay, Bowen Island & Whytecliff Park
Town Tour	13:00-15:00		Whitewater Rafting	Interactive English Classes	Overnight Camping Excursion	Board Game Tournament	
Welcome Game	afternoon/evening			Optional Activities*		Movie Time	

\*All schedules subject to change.

\*Activities are subject to change.

**Lunch 12:00 - 13:00**

## \*Optional Activities:

In order to meet individual interests we keep some time slots free for students to choose their preferred activity.

These activities are not included in the price (but free of charge activities are available).

Students also have the option of adding the following activities to their desired week:

- Whitewater Rafting
- Ziptrek/Monkido
- X-Country Mountain Biking
- Paintball
- Bounce Indoor Trampoline
- Horseback riding

Notes: Optional activities must be booked in advance and are subject to availability.

Please ask for the activity price list at time of booking.

Some activities require a minimum number of participants.



# activities



At IH Whistler we believe that learning doesn't stop once classes are over. Students are encouraged to participate in daily organized activities like mountain ski/snowboard days, climbing, school dinners and movie nights. For outdoor sport enthusiasts, IH Whistler's staff is unique in its ability to teach technical skills that take outdoor recreation to the next level. Catering to the requests of students, we offer a wide range of activities that are interactive and fun with the added benefit of continued English use.



we offer a wide range of activities that are interactive and fun with the added benefit of continued English use.





Winter Activities: ● Summer Activities: ●

	JAN	FEB	MAR	APR	MAY	JUN	JUL	AUG	SEP	OCT	NOV	DEC
Skiing/Snowboarding	●	●	●	●	●	●	●				●	●
Dog Sledding	●	●	●	●								●
Outdoor climbing					●	●	●	●	●	●		
Snowmobiling	●	●	●	●								●
Eagle Viewing	●	●	●									●
Ice Skating	●	●	●	●	●	●	●	●	●	●	●	●
Hiking				●	●	●	●	●	●	●		
Fishing			●	●	●	●	●	●	●	●	●	
Bungee Jumping	●	●	●	●	●	●	●	●	●	●	●	●
Summer Skiing					●	●	●					
Skateboarding	●	●	●	●	●	●	●	●	●	●	●	●
Golfing					●	●	●	●	●			
Canoeing/Kayaking					●	●	●	●	●			
Swimming						●	●	●	●			
Rafting					●	●	●	●	●			
Horseback Riding					●	●	●	●	●	●		
Bike Park					●	●	●	●				
Mountain Biking					●	●	●	●	●			
Bouldering					●	●	●	●	●	●		



Whistler-Blackcomb offers the highest vertical lift service and the largest terrain of any ski area in North America. It is consistently rated the top winter resort in Canada- and boasting the world's biggest and best downhill bike park, Whistler summers are second to none!



# accommodations

**International House Whistler offers a range of accommodations for students in both summer and winter.**

## Student House:

IH Whistler's student houses are located 400m from the base of the Whistler gondola and just a 10 minute bus ride from our campus in Whistler village.

- Private or shared room options
- Full kitchen
- Laundry
- Wifi internet
- Cable TV

## Homestay:

The most popular option for students seeking an integrated learning experience is homestay. Living with a local family is a great way to improve your English and get an insight into Canadian culture! We have families throughout Whistler dedicated to providing students with genuine "home-away-from-home" experiences.

- Private bedroom
- 3 meals a day
- Wifi internet



## testimonials



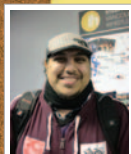
The school is perfectly located and the surroundings are superb! I had access to so many great activities.

Livai, France



I integrated very easily. The atmosphere at the school is very welcoming. I made many friends easily here.

Sandra, France



IH has a very nice environment for anyone who wants to succeed with their studies. It provides the right balance between education and fun activities.

Faisal, Saudi Arabia



The teachers were very kind and great at getting all of the students involved in the class.

Rita, Taiwan



This is the best way to learn English. We get to talk a lot in the classes and the teachers are there to help and support us. I really improved my speaking at IH.

Marc, Switzerland



IH was the best place to learn English!

The atmosphere was great and, because I made friends from all over the world, I improved my English naturally. I want to recommend IH to everyone. It is the best English school!

Ji Jun, South Korea



The teachers and staff were very kind and helpful, I loved it! They care about you a lot and I had a very happy time here at IH. The structure of the school is perfect!

Eduardo, Brazil



You can make a lot of different friends from different nationalities here! France, Germany, Taiwan, Brazil...so many I can't name them all here! IH is the best place to make international friends!

Shizuka, Japan

# **CORE CAMPS**

winter ski & snowboard camps



**Train and ride with top pro  
coaches and experience  
Whistler's legendary powder,  
learn new tricks and improve in  
small, focused groups!**



## **Ski/Snowboard Camps**

International House Whistler is pleased to offer its students preferred rates with our partner Core Ski & Snowboard Camps. Camps start every Monday from December to April and are for novice to expert level skiers and snowboarders. Choose from free-ride, free-ski, freestyle and instructor training camps.

Weekly clinics and full camp packages available.

More info at [www.corecamps.com](http://www.corecamps.com)





Download our  
brochures in PDF



# International House Pacific



[ihpacific.com](http://ihpacific.com)

## International House Whistler

302 - 4293 Mountain Square  
Whistler, British Columbia, V0N 1B4, Canada

Tel: +1-604-905-0505  
Fax: +1-604-905-0555  
E-mail: [info@ihwhistler.com](mailto:info@ihwhistler.com)  
[www.ihwhistler.com](http://www.ihwhistler.com)

