

EDINBURGH GROUP PROGRAMME FOR 2015 SENIORS (AGE 50+ YEARS) OFFERED ALL YEAR ROUND

Page 1/3



Photography



Golf at Dalmahoy



River Cruise

LOCATION OF PROGRAMME

The programme uses Global School of English - Edinburgh to provide the morning English Language lessons, Monday to Friday. Global school is situated in an unbeatable city centre location, on York Place, we are just 5 minutes' walk from the main shopping area of Princes Street and close to all of Edinburgh's top attractions, including Edinburgh Castle, Holyrood Palace and the Royal Mile. We are located on the main bus routes and, with a stop literally outside our front door, we could not be better placed for access to and from host families and activity locations. The area is famous for its connection with Sherlock Homes. Sherlock Homes' statue is five minutes walk from the school.

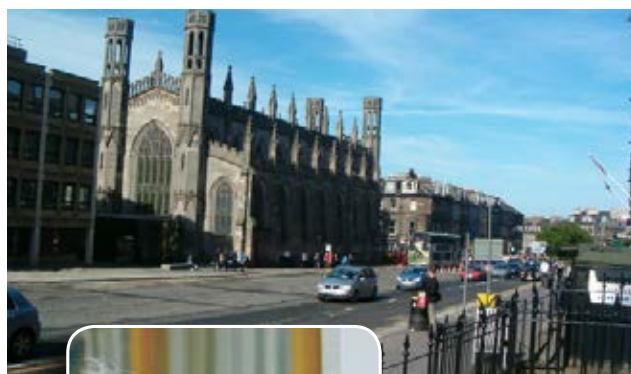
The School is small and friendly and has established a reputation for providing high quality tuition in a relaxed and welcoming setting in the centre of Edinburgh

THE PROGRAMME

The programme is offered to groups of senior adults who are seeking to combine upgrading their English language skills with a sightseeing holiday. Individuals from a group will be infilled into existing adult classes appropriate to their language ability.

The programme can be booked for ONE or TWO weeks, Sunday to Sunday. The programme provides a STANDARD PROGRAMME at a low cost.

Additional sightseeing trips and activities can be added to the STANDARD PROGRAMME to provide an interesting programme tailored to suit the budget and interests of the group. Activities such as Photography, Golf, Walking tours with culture, history and general sightseeing. Refer to Page 3/3 for suggested activities/trips.





Parliament Debating Chamber



Edinburgh Castle



Princes Street Gardens

STANDARD PROGRAMME

The STANDARD PROGRAMME is based on the group arriving and departing at a weekend and includes:

- 15 hours of English language tuition in international classes. Three hours per day, Monday to Friday.
- Accommodation in self catering, student residential flats with single en-suite bedrooms or host families on a half board basis in a single or twin bedroom with shared facilities, or a small hotel on a B/B basis and single/twin/double bedroom.

It should be noted that the cost per week will vary depending upon the accommodation option chosen and high or low season. High season is May to September.

- All transfers from and to Edinburgh International airport or train station to accommodation including a 'meet and greet' service.
- Local travel bus pass.
- All teaching materials.
- Free internet and WiFi in school
- Free use of all school facilities.
- One full day trip from prepared list with mature leader.
- Two cultural afternoons from prepared list with mature leader.
- Two social evenings from prepared list with mature leader.

BOOKINGS

Group Leaders and agents should contact Hamilton School to discuss the activities and sightseeing trips wanted in addition to the STANDARD PROGRAMME that will meet the budget and interests of the group.



Contact us on
info@hamiltonschool.co.uk



EXAMPLES OF OPTIONAL GROUP ACTIVITIES

Page 3/3

The activities and attractions listed below are provided as a guide for groups in designing a full programme to complement our standard group programme. This list is designed to assist groups to tailor their visits based on their particular interests and budget.

The attractions listed represent some of the most popular and rewarding trips for visitors to Edinburgh but the list is by no means exclusive and if you need assistance in putting together a programme of visits or activities to reflect your particular interests, please do not hesitate to contact us.

For further ideas of what else you can do and see while in Edinburgh and Scotland please visit www.visitscotland.com/guide/see-and-do

All the activities and attractions listed below can be visited either on foot or by local bus within Edinburgh and where prices are listed these cover admission charges only. Indicative costs for providing a mature leader to accompany group visits are noted after the table below.

ACTIVITIES/ATTRACTIONS INCLUDED IN THE STANDARD PROGRAMME

FULL DAY SIGHTSEEING TRIPS

- Visit to Glasgow with open deck bus tour, shopping and fish and chips on way home.
- Visit to Loch Ness (catch a sight of the monster maybe?). Note that this is a very full day leaving early morning and returning late.
- Visit to Stirling Castle & surrounding area

Group to choose one

AFTERNOON CULTURAL ACTIVITIES

- Visit to Edinburgh Castle
- Visit to Holyrood Palace and the Queen's Gallery
- Edinburgh open deck bus tour
- Visit to Royal Yacht Britannia

Group to choose two

SOCIAL EVENINGS

- Ghost Tour
- Theatre
- Pub visit
- Scottish Country dancing

Group to choose two.

ACTIVITY / ATTRACTION	OPTIONAL ACTIVITIES/ATTRACTIONS AT EXTRA COST per person.	Cost per participant*
Edinburgh Dungeon		£13
Mary King's Close - Edinburgh Old Town uncovered!		£11
Dynamic Earth		£11
Bowling night (two games)		£13
Camera Obscura and World of Illusions		£9
The Georgian House – historic "New Town" property		£6
Gilmerton Cove – historic underground passageways		£6
Gladstone's Land – historic property in Royal Mile		£6
Scottish Storytelling Centre		£5
Scott Monument, Princes Street		£3
Scottish Parliament		FREE
Arthur's Seat and Salisbury Crags – panoramic viewpoint of Edinburgh		FREE
Duddingston village and loch		FREE
Dean village and the Water of Leith		FREE
Museum of Childhood		FREE
Royal Botanic Garden		FREE
St Giles' Cathedral		FREE
Scottish National Portrait Gallery		FREE
National Museum of Scotland		FREE
Museum on the Mound – the story of money!		FREE
Scottish National Gallery		FREE
Walking trips (afternoons and evenings)		FREE

* All costs quoted are approximate and may vary when a specific programme quotation is provided.

For more information on the city, Scotland, attractions and events visit www.visitscotland.com/destinations-maps/edinburgh-lothian

If a mature leader is required to accompany groups on any extra whole day, afternoon or evening activities or excursions the price would be as follows:

Whole day: £20 per student	Afternoon: £10 per student	Evening: £10 per student
----------------------------	----------------------------	--------------------------

Full day trips can be added to the programme as required such as visit to Stirling Castle where William Wallace defeated the English army, Glencoe and the Scottish Highlands, Visit to St Andrews where Kate and Prince William met. The cost for extra full day trips is £50 per person.