



# GEORGETOWN UNIVERSITY

English as a Foreign Language  
(EFL) Program







## TABLE OF CONTENTS

Welcome to Georgetown  
Intensive English Programs  
Business & Professional English  
Student Life  
Testimonials  
Visa & Admission  
Request Information

Welcome To

# GEORGETOWN UNIVERSITY

## ESTABLISHED IN 1789

Georgetown University, located in Washington, D.C., is one of the world's leading academic and research institutions. Today, approximately 17,000 students study at Georgetown University. The campus features historic buildings and beautiful green spaces.

### THE GEORGETOWN UNIVERSITY EFL PROGRAM OFFERS:

- Six levels of instruction; basic to academic bridge
- Small class sizes and experienced faculty
- Intensive English - Monday - Friday, 20 hours per week
- Cultural activities in a fascinating city with historic monuments and world-class museums; the heart of American culture and politics



### DO YOU WANT TO:

- Improve your English
- Prepare to study at a University in the U.S.
- Learn about American culture
- Improve your TOEFL score
- Communicate more effectively at work



# Intensive English Programs

## INTENSIVE ENGLISH SEMESTER

Fall/Spring–16 weeks, Summer – 8 weeks  
basic to academic bridge levels

- Improve academic reading, writing, listening and speaking
- Choose elective classes including business, academic skills, current events, and popular culture
- Prepare to study in U.S. colleges and universities.



## AMERICAN LANGUAGE & CULTURE (ALC)

Winter – 4 weeks; intermediate to advanced levels

- Learn about American culture
- Improve listening, speaking, and cross-cultural communication skills
- Explore history and culture of D.C. through field trips

## AMERICAN CONVERSATIONAL ENGLISH (ACE)

Summer – 3 weeks; basic to advanced levels

- Improve English for everyday life
- Focus on listening and speaking
- Discuss local and world topics in a relaxed, informal setting



### Example Schedule:

	Monday	Tuesday	Wednesday	Thursday	Friday
9-11	Reading Writing Research	Reading Writing Research	Reading Writing Research	Reading Writing Research	Reading Writing Research
11-1	Workshops	Workshops	Workshops	Workshops	Interact DC
1-3	Listening Speaking Grammar	Electives	Listening Speaking Grammar	Electives	Listening Speaking Grammar



# Business & Professional English

(Fall and Spring semesters – 1 year)

The two-semester BPE program is for business professionals or international students interested in acquiring a professional level of English ability while learning principles of American business. BPE students take five business courses taught by Georgetown McDonough School of Business faculty as well as professional English courses taught by EFL faculty.



## EFL Program Special Features & Student Life

### EFL PROGRAM SPECIAL FEATURES

#### WEEKLY WORKSHOPS

Pronunciation, writing, university applications, and TOEFL preparation workshops

#### UNIVERSITY APPLICATIONS ADVISOR

One-on-one with a college applications advisor to help select a school and prepare an application

#### COFFEE HOUR

Socialize with students and faculty

#### LANGUAGE EXCHANGE PROGRAM

Practice English and share your language with a conversation partner

#### INTERACT DC

Weekly guest speakers from the campus and community

#### HOUSING

The Student Services Coordinator in the EFL program provides assistance with on-campus and off-campus housing.

#### CAMPUS FACILITIES

The Georgetown University campus offers

- Outstanding libraries
- Yates - A modern athletics facility
- Performing arts center
- Student health center

#### ACCESS DC OUTINGS

Practice your English while having fun and exploring the city of Washington, D.C. Outings include:

- Famous sites including the White House, Capitol, and monuments
- Theatre performances at the Kennedy Center
- Baseball, soccer, basketball, and football games
- Hiking and kayaking
- Trips to nearby historic cities (Annapolis, Baltimore, Alexandria, and more)





# Student Testimonials



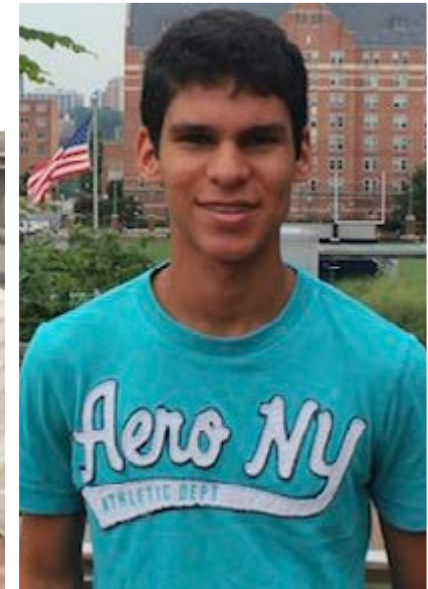
ACE was for me a window to reach better professional opportunities. Also, I feel that the high quality of the staff, the strict program schedule and all the resources that GU has for all the students (library, labs, work shops, Interacts etc) are the right combination to provide a high quality service which becomes tangible in the students skills.

– Victor Caicedo Barros, Venezuela



The EFL classes are helpful to improve English ability. Students can learn not only English skills, but also knowledge that is necessary for further education in the university. For example, I learned about the college application process, the correct form of citations, and ways to research information for academic papers.

– Junghyun Ahn, Korea



Being in the capital of the United States of American is such a good feeling because there is a piece of American culture hidden in every corner of the city. And having gone to those symbolic

places here in DC has shown me American history from a different perspective.

Academically, I have never met so many people willing to help you reach excellence. No matter how long it takes, the faculty and staff will have the patience and the best smile in order to help you.

– Gustavo Ascanio, Venezuela



When I graduated from the EFL program I felt well prepared to begin my university studies here in the U.S.

– Aseel Alrajhi, Saudi Arabia



The BPE program is a great opportunity to learn practical business skills and meet professionals from all over the world. I have made long lasting friends in the BPE program and have enriched my cross cultural experience at Georgetown University.

~ Alejandro Borda Patino, Colombia





# Application & Visa Information

## Application Checklist

Check our [website](#) for complete details.  
Below is a summary.

1. Complete application form
2. Pay application fee: US\$50
3. Pay advance deposit: US\$200
4. Send the following:
  - a. Transcripts of academic records
  - b. Evidence of financial support (only if requesting an I-20)
  - c. Copy of passport picture page
  - d. Passport-size photo

## Visa Information

All students have to have an F1, J2 or A1 visa.





Application



Website



Facebook



Twitter



Instagram

## ENGLISH AS A FOREIGN LANGUAGE (EFL)

Intercultural Center 481  
Georgetown University  
Washington D.C. 20057

Phone: (202) 687.5978  
Fax: (202) 687.1707

[eflgu@georgetown.edu](mailto:eflgu@georgetown.edu)