

# CALIFORNIA STATE UNIVERSITY, EAST BAY

*WELCOME TO THE SAN FRANCISCO BAY AREA!*



CALIFORNIA STATE  
**UNIVERSITY**  
E A S T B A Y

## **INTERNATIONAL PROGRAMS**

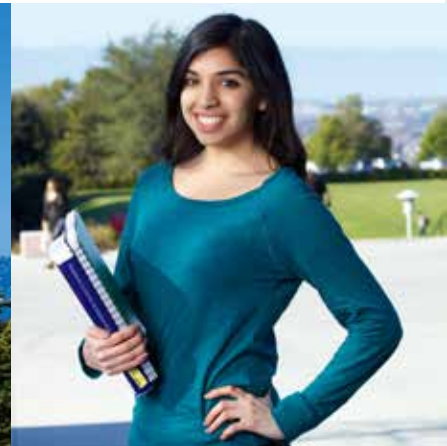
# WELCOME TO CALIFORNIA STATE UNIVERSITY, EAST BAY

Choosing a university is one of the most important investment decisions you will ever make. A degree from Cal State East Bay will have lasting economic and personal value. You have many options, but California State University, East Bay (CSUEB) wants to be the university you choose.

## Top Reasons to Choose CSUEB:

- 1. Academic Excellence:** *The Princeton Review* has recognized CSUEB as a “Best in the West” college since 2004. CSUEB is known for award-winning programs, expert instruction, small classes, and highly-personalized learning environment.
- 2. Competitive Price:** The institute tops the index for value and affordability with among the lowest fees in the nation for comparable universities. The estimated cost for international students per year (including tuition and living expenses) is under \$30,000 per academic year.
- 3. Location:** Located in the heart of the beautiful San Francisco Bay Area, CSUEB is just a 30-40 minute drive to either San Francisco or Silicon Valley.
- 4. Safety:** Our parklike hilltop campus overlooking the San Francisco Bay is in a residential area, giving the comfort and security of a family community.
- 5. Cultural Diversity:** With a total enrollment of 14,526 students, CSUEB hosts over 1500 international students representing over 80 countries from around the world each year. Our dynamic multi-cultural university community is recognized nationally for the number of degrees awarded to students of color by *Diverse Issues in Higher Education*.
- 6. Career Development Opportunities:** Our commitment to experiential education makes it possible to apply for internships with national and Bay Area companies that are leaders in their field.

It's the best combination of: **Program—Location—Price.**





# ADMISSION REQUIREMENTS



## Undergraduate Admission Requirements

- TOEFL 61 or IELTS 6.0
- High school diploma or graduation certificate
- Official academic records
- Freshmen: Minimum high school GPA 3.0
- Transfer: Minimum 2.0 GPA required
- Conditional Admission is available for those who are academically qualified, but do not meet the English language requirement. (see page 7 for details)

## Graduate/Post Graduate Requirements

- TOEFL 79 or IELTS 6.5
- A degree awarded by an accredited university equivalent to a four-year U.S. bachelor degree with a minimum GPA of 2.5 on final two years (3.0 recommended)
- Note: some departments require a higher GPA or TOEFL/IELTS score
- Official academic records
- Some departments may have additional requirements and standards for admission.



Living on campus at CSUEB is much more than having your own student apartment or suite located just a short walk from classes. It's about becoming part of a true living-learning community designed to help you thrive academically, personally, and socially.

Our **on-campus housing** is safe, convenient, and comfortable. The spacious, fully-furnished apartments consist of 1 to 4 bedrooms, one or more bathrooms, a living room and a kitchen (full-size refrigerator, sink, microwave and cabinet spaces). Group study, laundry and activity rooms are among the amenities. High-speed internet access is provided and phone and cable television service are available.

The **Dining Commons** on campus offers a variety of meal plans and delicious, fresh choices— plus a view of the Bay! Elsewhere on campus find quick meals, snacks, and drinks at Starbucks, Jamba Juice, Subway, Taco Bell, Pizza Hut Express, Panda Express, Einstein Bros. Bagels, Greens to Go, and P.O.D. market.

Keep fit in a swimming pool on campus or at the state-of-the-art **Recreation and Wellness Center** which features a gymnasium, indoor track, fitness classes, personal trainers, and equipment rental.







The American Language Program (ALP) offers a wide range of high-quality, intensive English language classes, IELTS preparation and non-degree programs for students from all over the world. For over three decades, our international staff and instructors have equipped students from over 50 countries to achieve their personal, academic, and career goals. Beyond the focused attention we give students through individual academic advising and support, we also help students connect with each other and the community.

- The **Speaking Partners program** matches ALP students with other Cal State East Bay students for conversation. The program encourages cross-cultural communication and provides an opportunity for all students to explore the diversity found on the Cal State East Bay campus.
- **Fun Trips!** In the San Francisco Bay Area, we have lots of exciting places to see and fun things to do, not to mention the beautiful weather to enjoy! Every quarter, we take our students to events and must-see places in Northern California. It is an opportunity for our students to get to know their classmates, make new friends, and use their English in a social setting. From cheering on the Golden State Warriors at an NBA basketball game to winery tours, hiking redwood forests, cruising the Santa Cruz beach boardwalk, or attending the Chinese New Year parade in San Francisco's Chinatown, our varied trips offer something of interest for everyone.
- ALP's weekly **Special Hour** provides an opportunity for students, instructors, and staff to gather outside of the classroom. Each session features a different discussion topic or activity ranging from blues music to English high tea. In addition, participants often enjoy a tasty treat related to the topic of discussion.

*Below: ALP students relaxing between classes (middle) and ALP students and staff on a whitewater rafting "Fun Trip" (right).*



# INTENSIVE ENGLISH PROGRAM



*"My life has changed because of the English Language Program at Cal State East Bay. I was a medical doctor in my home country, but upon moving to the Bay Area, it didn't look like I would be able to practice medicine here because of my English skills. In two quarters, my English speaking and writing skills have improved greatly and I am preparing for my first exams. My dream of continuing my medical career is going to come true because of this program."*

*Marcela Avila  
Intensive English Program  
Argentina*

## Program Overview

This Intensive English Language Program (IEP) teaches a variety of English skills including general English and English for academic preparation. The course curriculum offers six levels of instruction including beginner, intermediate, and advanced. Program instructors have Master's degrees in teaching and have first-hand experience working with international English learners.

## Admission Requirements

- High-school diploma or equivalent

## Program Features

- Year-round quarterly schedule. 1 quarter = 10 weeks (5 week programs also available in the summer)
- Class size of 15-18 students
- University Preparation Program:
  - Weekly courses that prepare students for freshman year at CSUEB
  - University degree counseling and admissions advising
  - Workshops and activities for students to practice communication skills in an academic setting
- Bay Area Experience - Weekly program of activities to encourage English use outside the classroom

## Course Curriculum

- Academic English: Speaking • Listening • Reading • Writing
- Integrated skills courses in subject areas to prepare for General Education classes
- Elective Classes:- US American Culture • Understanding Business • Film and Music • U.S. American History • Famous People • Current Events • A Taste of Hospitality/Bay Area Experience
- IELTS Preparation courses that help students prepare for the exam (California State University, East Bay is an **official IELTS Testing Center** and offers the test on campus every month)

## Program Outcomes

- Fluency in English speaking and writing for academic, professional, and general purposes
- Broadened knowledge of academic subjects from a U.S. perspective
- Enjoyment of many intellectual, social, and cultural experiences

## Program Benefits

- Practice to improve English speaking and writing skills
- Exposure to American and other cultures
- An opportunity to meet and learn with American students, and other people from countries around the world

## How to Apply

- Complete an Intensive English Program application at [www.csueastbay.edu/ALP](http://www.csueastbay.edu/ALP)

# CONDITIONAL ADMISSION

## Program Overview

California State University, East Bay offers conditional admission to undergraduate programs for students who are academically qualified, but have not met the English language requirement. Students are issued a conditional admission letter to attend the American Language Program (ALP) Intensive English Program until they meet the language requirement for a CSUEB undergraduate degree program. An I-20 will be issued by CSUEB indicating that the student will be admitted to a University undergraduate program upon meeting the English language requirement, which includes successful completion of ALP coursework.

## Admission Requirements

Applicants must meet academic requirements for Undergraduate admission (see page 3).

## Application Checklist: How to Apply

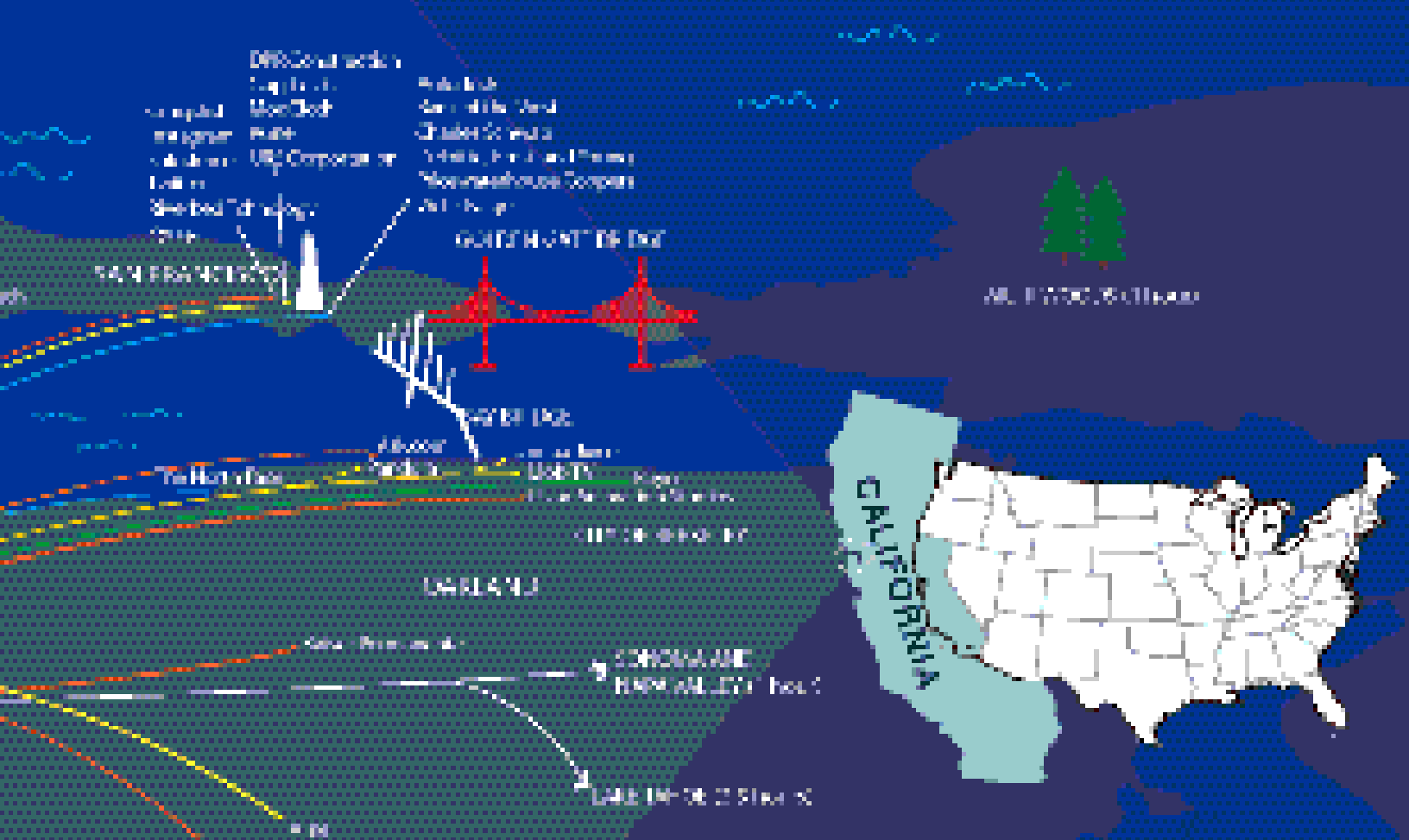
1. Complete an Intensive English program application available at [www.csueastbay.edu/ALP](http://www.csueastbay.edu/ALP)
2. Submit an online application to CSUEB at [www.csumentor.edu](http://www.csumentor.edu)
  - On the CSU Mentor application, apply for the earliest quarter available.
  - On the ALP application form, write the actual quarter you want to start your Intensive English Studies.
  - When you are finished with the online application, print out a copy of your CSUEB International Application Agreement Statement and include it with your application. The form should contain a confirmation number.
3. Request official academic records from secondary school or any college or university attended. Academic records must be in a sealed envelope from the issuing school and must include an official English translation.
4. Complete and print out the following forms from [www.csueastbay.edu/ALP/application](http://www.csueastbay.edu/ALP/application):
  - Declaration of Finances/Health Insurance Compliance Form
  - I-20 Letter of Consent
5. Submit a copy of passport biographic page.
6. Mail the completed application package to:  
Admissions Coordinator, American Language Program  
California State University, East Bay  
25800 Carlos Bee Blvd.  
Hayward, CA 94542

The completed application package will also be reviewed by the CSUEB International Admissions Office. Students will be contacted regarding the status of their conditional admission decision by the ALP office.









*Nassar will soon be completing an internship at biotech giant Genentech as part of his Master's degree in Statistics.*

*Nassar Al-Ali  
MS student, Statistics  
United Arab Emirates*



*After graduating with a degree in Finance in 2011, Cindy accepted a position as a Financial Representative at Fidelity Investments, a worldwide leader in the financial industry.*

*Aige (Cindy) Shi  
CSUEB alum: BA, Finance  
China*

# Pre-MBA



*"The Pre-MBA program helped make the transition to the American school system smoother and less intimidating. It also prepared me to score well on the GMAT and handle the intensity of the MBA program."*

Niklas Jonsson  
Pre-MBA Program/MBA  
Sweden

## Program Overview

Offered in collaboration with the College of Business and Economics, the Pre-MBA is an intensive, integrated curriculum of business courses, GMAT and IELTS preparation, and critical academic skills for international students preparing to enter graduate business school. (NOTE: Admission into Pre-MBA does not guarantee admission to the MBA Program at Cal State East Bay)

## Admission Requirements

- A degree satisfying the undergraduate requirements of the MBA, including no less than a GPA of 2.5 in the final two years of study. This requirement can be met through screening of the transcript by the CSUEB International Admissions Office, following guidelines set by the College of Business.
- An online application through [www.csumentor.edu](http://www.csumentor.edu). A GMAT score is a requirement for continuing from first to second quarter in the program. IELTS 6.0 or TOEFL 71

## Program Outline

Pre-MBA Program Students are admitted to this program when preparing for admission to Cal State East Bay's AACSB accredited Masters in Business Administration. The length of program depends on their needs - one to three quarters of study are possible (three to nine months). A typical three month program consists of:

- One graduate level MBA Fundamental course for credit (4 quarter credits) in Accounting, Information Technology or Management
- Graduate Writing and IELTS Preparation Workshops (8 hours per week)
- GMAT Preparation Workshops (4 to 8 hours per week)
- One undergraduate Math or Statistics course if required by the College of Business

## Ideal Student(s)

- Students who do not possess an undergraduate degree in business, and intend to pursue an MBA degree or any Master's in business degree at Cal State East Bay or other American university
- Undergraduate business majors who need to master the English and/or academic skills needed to pass required TOEFL or IELTS exams and GMAT exam foundation course work to assist in acceptance to the university MBA Program
- Non-business professionals who seek an accelerated foundation in business administration without the degree

## Program Outcomes

- Full transfer of credit into the 2-year MBA of one to three foundation courses (4-12 units)
- Prospective admission to MBA program after meeting the requirements set by CSUEB College of Business and Economics (GMAT + two last year's undergraduate GPA X 200 = 1050; both GMAT Verbal and Quant scores over 20th percentile; IELTS 6.5 or TOEFL 79)

## How to apply

Application forms can be downloaded from the Web at [www.csueastbay.edu/alp](http://www.csueastbay.edu/alp).

# INTERNATIONAL BUSINESS DIPLOMA

## Program Overview

This is an intensive program that concentrates on the complexities of the movement of goods and services across national boundaries. Program curriculum focuses on the practical aspects of international business including logistics, finance, marketing and international management. Taught by a combination of globally-recognized California State University, East Bay faculty and successful multinational business executives, this comprehensive international business education program covers topics ranging from international marketing and international law to international business strategy and supply chain management. Students can also look forward to high-profile guest speakers who will share specific and practical advice about issues and problems they have faced working in the international realm.

## Admission Requirements

Four-year bachelor's degree from an accredited institution and minimum TOEFL Score 71 (iBT) or IELTS 6.0

## Program Completion/Diploma requirements:

- Complete two-quarter option: Six required courses (24 units)
- Complete three-quarter option: Six required courses (24 units) plus 12 additional units specializing in Marketing or other business-related areas
- Maintain 2.5 overall grade-point average in each quarter. A grade of C or better is required in all courses.

## Ideal Student(s)

- Individuals who work or possess a degree in business that seek to gain specialized knowledge in international business or want to upgrade their skills.
- Individuals without a business background who wish to gain an overview of international business.

## Course Curriculum

- Developing an International Business Strategy
- International Marketing Decisions
- Internet Tools for International Business
- International Business Finance
- International Business Law
- Global Supply Chain Management (GSCM)
- Optional Third Quarter Specialization (12 units). Sample Coursework for Marketing Specialization
  - Managing Marketing: Theory and Practice (4 units)
  - Marketing Communications (4 units)
  - Marketing Planning (4 units)(Please note: Specific courses offered will depend on when the student is eligible for the third-quarter option)

## How to apply

Application forms can be downloaded from the Web at [www.csueastbay.edu/alp](http://www.csueastbay.edu/alp).



*"Cal State East Bay was the perfect choice for me because it allowed me to take accelerated studies in international business without having to commit to a time-consuming MBA. The six-month program was ideal!"*

*Elektra Kountouris  
International Business Diploma  
Greece*



# VISITING STUDENT PROGRAM

## Program Overview

Designed for international students to study on campus for one or more quarters (3 to 9 months) of full-time undergraduate study, the Visiting Student Program provides an opportunity for students to gain valuable exposure to U.S. life, culture, language, and academic system without the usual high pressure and intensity associated with regular university study. Visiting students attend classes with regular local and international undergraduate students and have access to all the university facilities including living in on-campus apartments and suites. While at CSUEB, they may participate in university sports and clubs, meet many different people, and make new friends. Students also have ample opportunity to travel over weekends and between terms to other parts of California and the United States.

## Admission Requirements

A TOEFL iBT score of 71 or IELTS 6.0 is required. Consult with the ALP Visiting Student Advisor if you are in doubt as to whether your English level is sufficient.

## Create Your Own Program

Visiting students work closely with their CSUEB advisor before arrival and during the program in regards to class selection. Students may pick classes that interest them, are required for credit at their home universities, or can be applied to a degree in the U.S. Each student chooses a specialty subject area to focus on at Cal State East Bay. The chosen subject can be any within our wide range of undergraduate majors (see pages 14-15).

## Ideal Student(s)

- Students in the “gap” year between high school and university
- Students who desire to take a break from their studies at a university in their home country
- Students who wish to take University courses for the cultural experience and the practice in using English.

## How to apply

Application forms can be downloaded from the Web at [www.csueastbay.edu/alp](http://www.csueastbay.edu/alp).



*“Cal State East Bay was the perfect choice for me because I could choose from a wide range of courses and content that perfectly fits into my studies. The location of the campus, within the very international Bay Area, is absolutely unique.”*

*—Holger Klinge  
Visiting Student Program  
Germany*



# LIFE AT THE BAY



As a student at Cal State East Bay, you'll have unlimited opportunities to join in the fun, meet people, and be part of campus life. Our student-athletes compete in the NCAA Division II against top teams in the California Collegiate Athletic Association. You can choose from more than 90 academic, athletic, honor, religious, recreational, and cultural clubs and organizations. Student government, service to the community and leadership groups provide ways for you to get involved and make a difference.





# DEGREES OFFERED AT CAL STATE EAST BAY

## UNDERGRADUATE PROGRAMS

### Anthropology (B.A.)

- Archaeology and Biological Anthropology Option
- Socio-Cultural Anthropology Option

### Art (B.A.)

- Art History Option
- Art Studio Option
- Graphic Design Option
- Multimedia Option
- Photography Option
- Pictorial Arts Option
- Spatial Arts Option

### Art (B.F.A.)

- Graphic Design Option
- Multimedia Option
- Photography Option
- Traditional Arts Option

### Biochemistry (B.A.)

- Chemistry Education Option

### Biochemistry (B.S.)

### Biological Science (B.A.)

- Biology Education Option
- General Biology Option

### Biological Science (B.S.)

- Cell and Molecular Biology Option
- Ecology and Conservation Biology Option
- Forensic Science Option
- General Biology Option
- Microbiology/Biomedical Laboratory Sciences Option
- Physiology Option

### Business Administration (B.S.)

- Accounting Option
- Business Economics Option
- Entrepreneurship Option
- Finance Option
- General Management Option
- Human Resources Management Option
- Information Technology Management
- Marketing Management Option
- Operations and Supply Chain Management Option

### Chemistry (B.A.)

- Chemistry Education Option

### Chemistry (B.S.)

- Forensic Science Option

### Communication (B.A.)

- Media Production Option
- Professional, Public, and Organizational Communication Option

### Computer Engineering (B.S.)

### Computer Science (B.S.)

- Computer Engineering Option
- Networking and Data Communications Option
- Software Engineering Option

### Construction Management (B.S.)

### Criminal Justice Administration (B.S.)

- Community Alternatives and Corrections Option
- Justice and Enforcement Option

### Economics (B.A.)

- General Economics Option
- Social Science Economics Option

### English (B.A.)

- Creative Writing Option
- Interdisciplinary Language, Literature, and Writing Studies Option
- Language and Discourse Option
- Literature Option

### Environmental Science (B.S.)

- Environmental Systems and Resource Management Option
- Life Science Option
- Physical Science Option

### Environmental Studies (B.A.)

- Environment and Society Option
- Physical Environment Option
- Sustainable Resource Management Option

### Ethnic Studies (B.A.)

- African American Studies Option
- American Indian Studies Option
- Asian American Studies Option
- Gender and Sexualities in Communities of Color Option

### • Latino/Latina Studies Option

### French (B.A.)

### Geography (B.A., B.S.)

### Geology (B.A., B.S.)

### Health Sciences (B.S.)

- Administration and Management Option
- Community Health Option
- Environmental Health and Safety Option
- Pre-Clinical Preparation Option

### History (B.A.)

- Asian and Middle Eastern History Option
- European History Option
- History of California and the American West Option
- Latin American History Option
- United States History Option

### Hospitality and Tourism (B.S.)

### Human Development (B.A.)

- Adolescent Development Option
- Adult Development and Gerontology Option
- Childhood Development Option
- Early Childhood Development Option
- Women's Development Option

### Industrial Engineering Option (B.S.)

### Interdisciplinary Studies (B.A., B.S.)

### International Studies (B.A.)

### Kinesiology (B.S.)

- Exercise Nutrition, and Wellness Option
- Physical Activity Studies Option
- Physical Education Teaching Option
- Social Justice Option
- Special Studies Option
- Therapeutic Studies Option

### Liberal Studies (B.A.)

- Liberal Arts Degree Pathway
  - Organization Leadership Option
  - Special Education Option
- ### Teacher Preparation Degree Pathway
- Childhood Studies Option

- Special Education Option
- Studies in Education Option (Bachelor's plus: Early pathway students only)

### Mathematics (B.S.)

- Applied Mathematics Option
- Mathematics Teaching Option
- Pure Mathematics Option

### Music (B.A.)

### Nursing (B.S.)

- Pre-licensure Option
- RN Advanced Placement Option

### Philosophy (B.A.)

### Physics (B.A.)

- Physics Education Option

### Physics (B.S.)

### Political Science (B.A.)

- Pre-Law Option
- Public Affairs and Administration Option

### Psychology (B.A.)

### Psychology (B.S.)

- Ergonomics and Human Factors Option
- Industrial/Organizational Psychology Option

### Recreation (B.S.)

- Recreation Management Option
- Recreation Therapy Option

### Sociology (B.A.)

- Social Services Option
- Sociology Option

### Spanish (B.A.)

### Speech Pathology and Audiology (B.S.)

### Statistics (B.S.)

### Theatre Arts (B.A.)

- Acting Option
- Dance Option
- Directing and Creative Vision Option
- Musical Theatre Option
- Technology and Design Option



# Cal State East Bay offers a wide variety of academic programs offering real-world focused curriculum designed to prepare you for a lifetime of personal achievement and career success.

## GRADUATE PROGRAMS

- Accountancy (M.S.)
- Anthropology (M.A.)
- Biological Science (M.A., M.S.)
- Biostatistics (M.S.)
- Business Administration (M.B.A.)
  - Entrepreneurship Option
  - Finance Option
  - Human Resource and Organizational Behavior Option
  - Information Technology Management Option
  - Marketing Management Option
  - Operations and Supply Chain Management Option
  - Strategy and International Business Option
- Business Administration, M.S.
  - Business Analytics Option
- Chemistry (M.S.)
  - Biochemistry Option
- Communication (M.A.)
- Computer Networks (M.S.)
- Computer Science (M.S.)
- Construction Management (M.S.)
- Counseling (M.S.)
  - Clinical Child/School Psychology Option
  - Marriage and Family Therapy Option
  - School Counseling Option
- Economics (M.A.)
- Education (M.S.)
  - Curriculum Option
  - Early Childhood Education Option
  - Educational Technology Leadership Option
  - Reading Instruction Option
- Education: Interdisciplinary, M.S.
  - Online Teaching and Learning Option
- Educational Leadership (M.S., Ed.D.)
- Engineering Management (M.S.)
- English (M.A.)
  - Teaching English as a Second Language Option
- Geography (M.A.)
- Geology (M.S.)
  - Environmental Geology Option
- Health Care Administration
  - Management and Change in Health Care Option
- History (M.A.)
  - Examination Option
  - Public History Option
  - Teaching Option
  - Thesis Option
- Interdisciplinary Studies (M.A., M.S.)
- Kinesiology (M.S.)
- Marine Science (M.S.)
- Mathematics (M.S.)
  - Option I (M.S.)
  - Option II (Mathematics Teaching)
  - Option III (Applied Mathematics)
- Multimedia (M.A.)
- Music (M.A.)
- Public Administration (M.P.A.)
  - Health Care Administration Option
  - Public Management and Policy Analysis Option
- Recreation and Tourism (M.S.)
- Social Work (M.S.W.)
- Special Education (M.S.)
  - Mild/Moderate Disabilities Option
  - Moderate/Severe Disabilities Option
- Speech-Language Pathology (M.S.)
- Statistics (M.S.)
  - Actuarial Statistics Option
  - Applied Statistics Option
  - Computational Statistics Option
  - Mathematical Statistics Option

## UNDERGRADUATE MINORS

- Advertising
- African American Studies
- American Indian Studies
- Anthropology
- Art History
- Art Studio
- Asian American Studies
- Asian Studies
- Biological Science
- Biostatistics
- Business Administration
- California Studies
- Chemistry
- Chinese Language and Cultural Studies
- Communication
- Computer Science
- Creative Video
- Creative Writing
- Criminal Justice Administration
- Dance
- Early Childhood Education
- Economics
- English
- Environmental Studies
- Ethnic Studies
- French
- Genders and Sexualities in Communities of Color
- Geography
- Geology
- German
- Health Sciences
- History
- Hospitality and Tourism
- Human Development
- Information Technology Management
- Interactive Sculpture
- International Business
- International Studies
- Italian
- Kinesiology (Physical Education)
- Latino/a & Latin American Studies
- Marketing
- Mathematics
- Multimedia
- Music
- Philosophy
- Photography

- Physics
- Political Science
- Psychology
- Recreation
- Sign Language
- Sociology
- Software Development
- Spanish
- Speech Pathology and Audiology
- Statistics
- Theatre
- Urban Studies
- Women's Studies (Human Development)

## NON-DEGREE AND CERTIFICATE PROGRAMS

- Applied Statistics
- Biotechnology
- International Business Diploma
- Paralegal Studies
- Preprofessional Health Academic Program





# CALIFORNIA STATE UNIVERSITY

## EAST BAY

At California State University, East Bay you will live and learn in one of the most beautiful, innovative and multicultural centers in the world. You will be equipped with a top-notch education that will enable you to make an immediate impact in your home country or be prepared for the next stage of your educational pursuits. Apply today.

## ACADEMIC CALENDAR

**CSU East Bay is a quarter system school.\***

**(11 weeks per quarter)**

- Fall quarter begins in late September.
- Winter quarter begins in early January.
- Spring quarter begins in early April.
- Summer quarter begins in mid-June.

## CONTACT INFORMATION

### International Admission for Degree Programs (Undergraduate and Graduate Degrees and Certificates)

California State University, East Bay  
International Admissions Office  
25800 Carlos Bee Blvd.  
Hayward, CA 94542  
Telephone: (510) 885-7571  
Fax: (510) 885-2325  
E-mail: [iao@csueastbay.edu](mailto:iao@csueastbay.edu)  
Web: [www.csueastbay.edu/CIE](http://www.csueastbay.edu/CIE)

Follow us:



[www.facebook.com/CalStateEastBay](http://www.facebook.com/CalStateEastBay)



[www.linkedin.com/company/california-state-university-east-bay](http://www.linkedin.com/company/california-state-university-east-bay)



[@CalStateEastBay](https://twitter.com/CalStateEastBay)



- \* *Specific starting dates vary from year-to-year*
- \* *Not all programs admit at every quarter.*
- \* *Effective Fall 2018 CSUEB will convert to a semester calendar.*

### International Admission for Non-Degree Programs (Intensive English Program, Pre-MBA, Visiting Students, Non-Degree Certificates & International Business Diploma)

California State University, East Bay  
American Language Program  
25800 Carlos Bee Blvd.  
Hayward, CA 94542  
Telephone: (510) 885-2358  
Fax: (510) 885-2040  
E-mail: [alpgen@csueastbay.edu](mailto:alpgen@csueastbay.edu)  
Web: [www.csueastbay.edu/ALP](http://www.csueastbay.edu/ALP)

